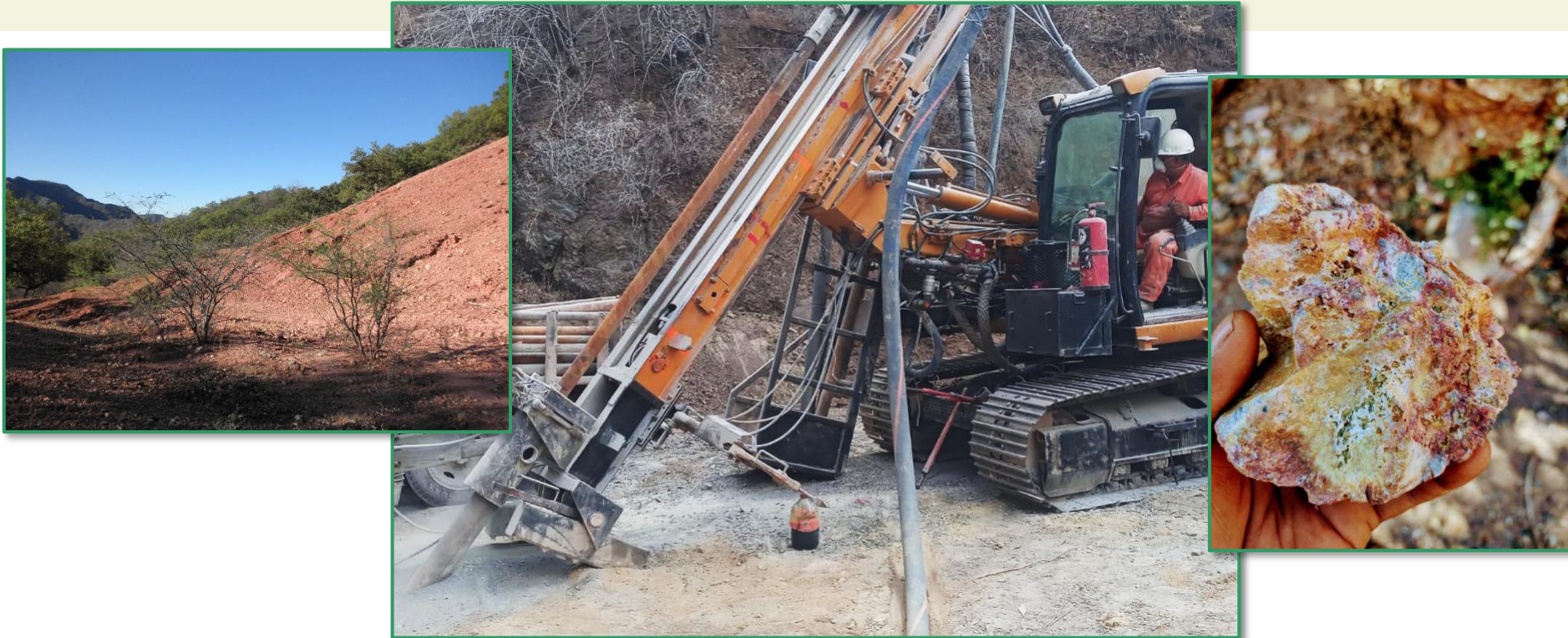


“Seizing Opportunity and Creating Value”



EXPLORING in MEXICO **Diamante** Au-Ag-Zn-Pb Project

TSX Venture: SSE
US OTCQB: SSEBF
Frankfurt: S6Q

www.silverspruceresources.com

June 2023



Cautionary Statement

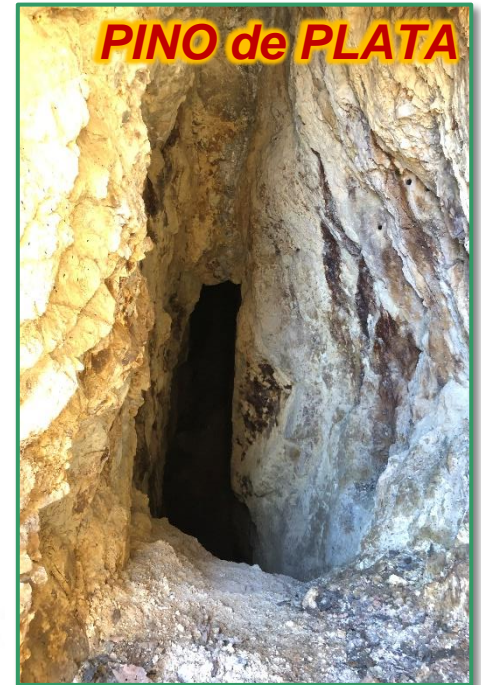
TSX Venture: SSE

Investors are cautioned that, except for statements of historical fact, certain information contained in this document includes "forward-looking information" with respect to a performance expectation for SSE. Such forward-looking statements are based on current expectations, estimates and projections formulated using assumptions believed to be reasonable and involving a number of risks and uncertainties which could cause actual results to differ materially from those anticipated. Such factors include, without limitation, fluctuations in foreign exchange markets, the price of commodities in both the cash market and futures market, changes in legislation, taxation, controls and regulations of national and local governments and political and economic developments in Canada and other countries where SSE carries-out or may carry-out business in the future, the availability of future business opportunities and the ability to successfully integrate acquisitions or operational difficulties related to technical activities of mining and reclamation, the speculative nature of exploration and development of mineral deposits located, including risks in obtaining necessary licences and permits, reducing the quantity or grade of reserves, adverse changes in credit ratings, and the challenge of title. The Company does not undertake an obligation to update publicly or revise any forward-looking statements or information, whether as a result of new information, future events or otherwise, unless so required by applicable securities laws.



Project Locations - Mexico

TSX Venture: SSE



Diamante Au-Ag Project, Sonora, Mexico



Diamante - The Property

TSX Venture: SSE

- ✓ Located 54km SW of Mulatos and 60km SW of La India Mines in the Sierra Madre Occidental gold-silver belt, 10km W of Nicho deposit
- ✓ Road and trail-accessible concessions comprising 1,057 hectares located 165km SE of Hermosillo
- ✓ Multiple Exploration Targets in vein, skarn and disseminated mineralization at La Prieta-El Aguaje, El Chon, El Pillado, La Olla, Lupita, Mezquite Raizudo, El Puerto, El Cumbro, Calton and Anomalía Sur
- ✓ Artisanal mining and limited exploration
- ✓ West and adjacent to Jackie joint venture
- ✓ Option Agreement to earn up to 50% interest
- ✓ Historical sampling reports **up to 39.8 g/t Au, 3,460 g/t Ag, 18.2% Pb and 33.5% Zn** in separate samples from surface, U/G and mine dumps



Large color anomaly with strong clay, hematite, jarosite alteration

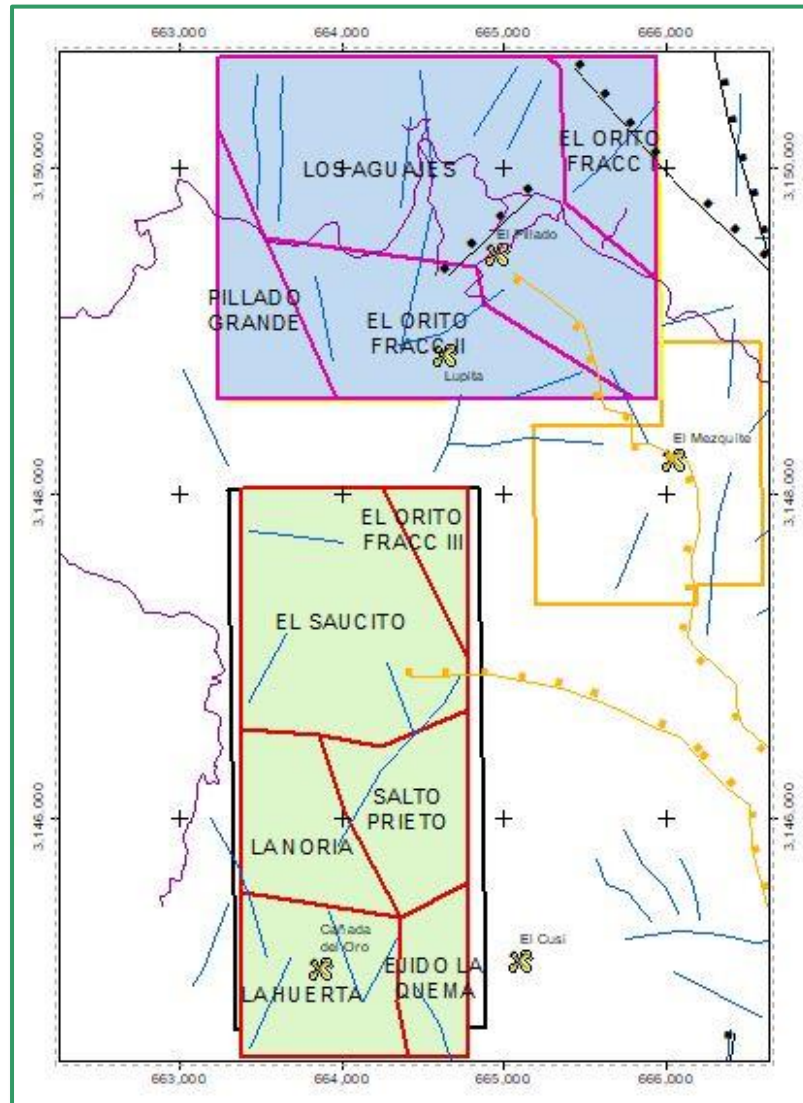
Diamante - Location, Access, Targets

TSX Venture: SSE



Diamante 1 and 2 - Ranches

TSX Venture: SSE



Diamante Historical Rock Sampling - Compiled

TSX Venture: SSE

SORTED BY Au and Ag EQUIVALENT GRADES (g/t)

Location	Sample ID	Au ppm	Ag ppm	Au equivalent	Ag equivalent
La Prieta	D-4	25.69	1,265	64.3	5,135.5
El Cumbro	No tiene	6.41	3,460	49.7	3,972.1
Calton Sur	65685	39.8	109	41.2	3,288.6
El Chon	30293	3.03	1,360	24.0	1,916.4
El Cumbro	3455	3.60	1,560	23.1	1,847.6
La Olla	D-7	0.61	58	21.7	1,732.3
Pillado	1876	0.306	159	19.9	1,593.2
La Olla	D-3	0.5	65	19.8	1,581.1
Calton	65615	18.65	62	19.4	1,552.0
La Prieta	30257	5.21	446	16.1	1,282.9
La Olla	D-6	0.366	90	15.5	1,234.7
La Olla	D-4	1.19	85	14.4	1,152.2
Pillado	D-9	0.27	84	13.9	1,107.9
El Chon	1891	0.292	1,067	13.8	1,104.5
La Olla	D-2	0.85	68	12.7	1,014.3
La Olla	D-5	0.16	150	12.3	979.3
El Chon Oeste	1920	1.54	746	11.7	931.7
La Prieta	65514	6.76	351	11.2	891.1
Mezquite Raizudo	65664	3.87	557	10.8	866.2
Mezquite Raizudo Sur	65670	6.41	307	10.3	819.1
El Chon	3469	1.17	705	10.0	798.5

Ag	\$	23.77	oz
Au	\$	1,899.00	oz
Pb	\$	1.07	lb
Zn	\$	1.64	lb
Cu	\$	4.55	lb



Diamante - Recent Exploration

TSX Venture: SSE

- ✓ Airborne LiDAR survey completed to provide high resolution topography and imagery
- ✓ Regional satellite hyperspectral interpretation completed
- ✓ LiDAR survey structural interpretation planned
- ✓ Preliminary geological mapping and rock sampling completed
- ✓ ArcGIS map compilation ongoing
- ✓ Due diligence sampling verifies several Au-Ag-Pb-Zn-Cu targets with artisanal working and mine dumps with **1.19 g/t Au, 834 g/t Ag, 1.2% Pb and 6.8% Zn**
- ✓ **Phase 1 ground geological targeting on known workings and mineralization completed**
- ✓ **Environmental report completed with receipt of drill permits**
- ✓ Proposal accepted for 2022 Phase 1 drilling - est. 2000 metres



Diamante - Recent Exploration

TSX Venture: SSE

- ✓ Drilling initiated in June 2022 at El Pillado target - 9 holes completed
- ✓ Drilling followed at La Prieta target - 10 holes completed
- ✓ Total drilling - 2,006 metres during June-July 2022
- ✓ El Pillado - Pb and Zn sulphide mineralization up to a combined 13.1 wt.% Pb+Zn, with elevated Ag to 397 g/t and Au to 0.934 g/t
- ✓ La Prieta - Pb and Zn sulphide mineralization up to a combined 18.35 wt.% Pb+Zn, with elevated Ag to 239 g/t and Au to 5.62 g/t
- ✓ AgEq grades of 200-870 g/t
- ✓ Intervals of 1.5 metres to 16 metres
- ✓ Mineralization associated with vein quartz and silicification and chlorite alteration
- ✓ **Local targets east of El Pillado and NNE from La Prieta**
- ✓ **New environmental report for drilling permit required for 2023 exploration**
- ✓ **Multi-phase geological mapping and drilling program proposed**



Chip logging with portable XRF in background

Diamante 2022 Rock Sampling

TSX Venture: SSE

- ✓ Completed geological mapping of drill targets
- ✓ Sample in image collected from Calton in Diamante 2 Concession
- ✓ Euhedral sulphides with tarnish
- ✓ Open space filling in pocket
- ✓ Preliminary PXRF (portable x-ray fluorescence) analysis reported 28 g/t Au
- ✓ Assays received from ALS Global in Hermosillo and Vancouver
- ✓ **Precious metals (Au to 51.5 g/t, Ag to 2,270 g/t), base metals (Pb to 42.3 wt.%, Zn to 22.9 wt.% and Cu to 3.2 wt.%)**
- ✓ Pathfinders each exhibited weak to highly anomalous values commonly with high Ag:Au and low to high Pb:Zn.
- ✓ Elevated Cu, Cd, Sb, Hg, As and Bi are linked commonly to Pb and/or Zn.



Diamante 2022 Rock Sampling (n=16 of 70)

TSX Venture: SSE

Target	Sample_ID	Au ppm	Ag ppm	Cu ppm	Pb %	Zn %
Calton	707410	51.5	11.3	76	0.09	0.01
Calton	707413	7.57	186	948	6.28	0.10
Mezquite Raizudo	707441	3.31	191	168	0.47	0.05
El Cumbro	707418	2.99	2270	2910	4.38	0.09
Mezquite Raizudo	707439	2.08	533	1945	3.78	7.47
La Prieta	707469	1.805	199	697	2.86	0.20
La Prieta	707468	1.41	140	1755	2.64	3.59
El Chon	707449	1.385	1980	88	11.10	0.01
La Prieta	707464	1.34	100	32000	5.67	16.75
Aguaje	707472	1.07	24.5	149	0.43	1.15
La Prieta	707470	0.939	223	2680	4.00	6.48
El Chon	707452	0.719	226	29	2.38	0.04
El Chon Oeste	707433	0.307	510	1620	0.47	0.04
Pillado	707460	0.27	81.8	589	3.60	22.90
Pillado	707453	0.197	1310	3740	42.32	8.20
Calton	707403	0.06	69.5	1225	2.48	5.91



Diamante 1 - La Prieta Artisanal Mining

TSX Venture: SSE



Diamante 1 – El Pillado Artisanal Mining

TSX Venture: SSE



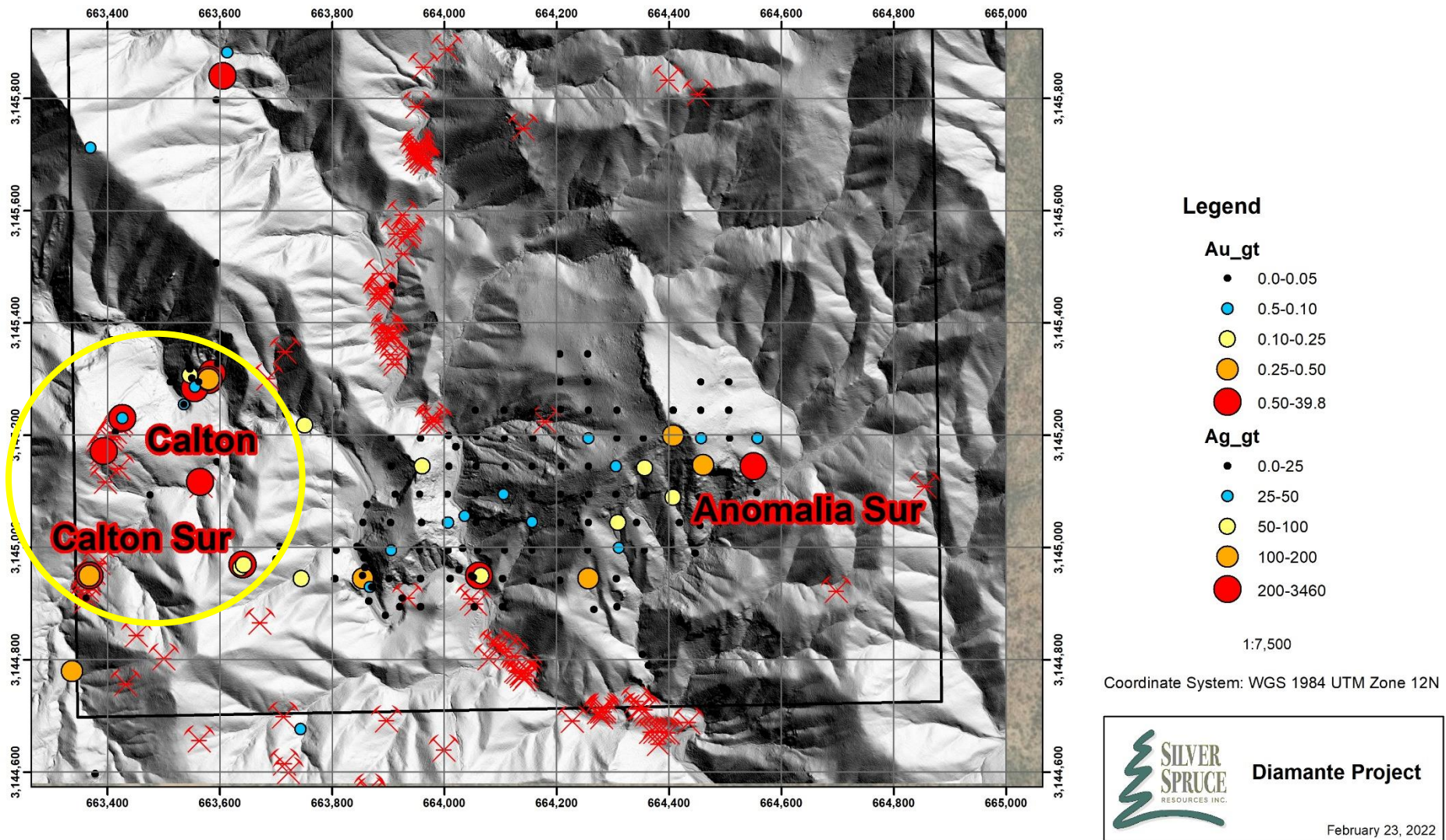
Diamante 1 - El Chon Sampling, Artisanal Mining

TSX Venture: SSE



Diamante 2 - Workings and Drill Targets

TSX Venture: SSE



Diamante 2 - Calton Artisanal Trenching

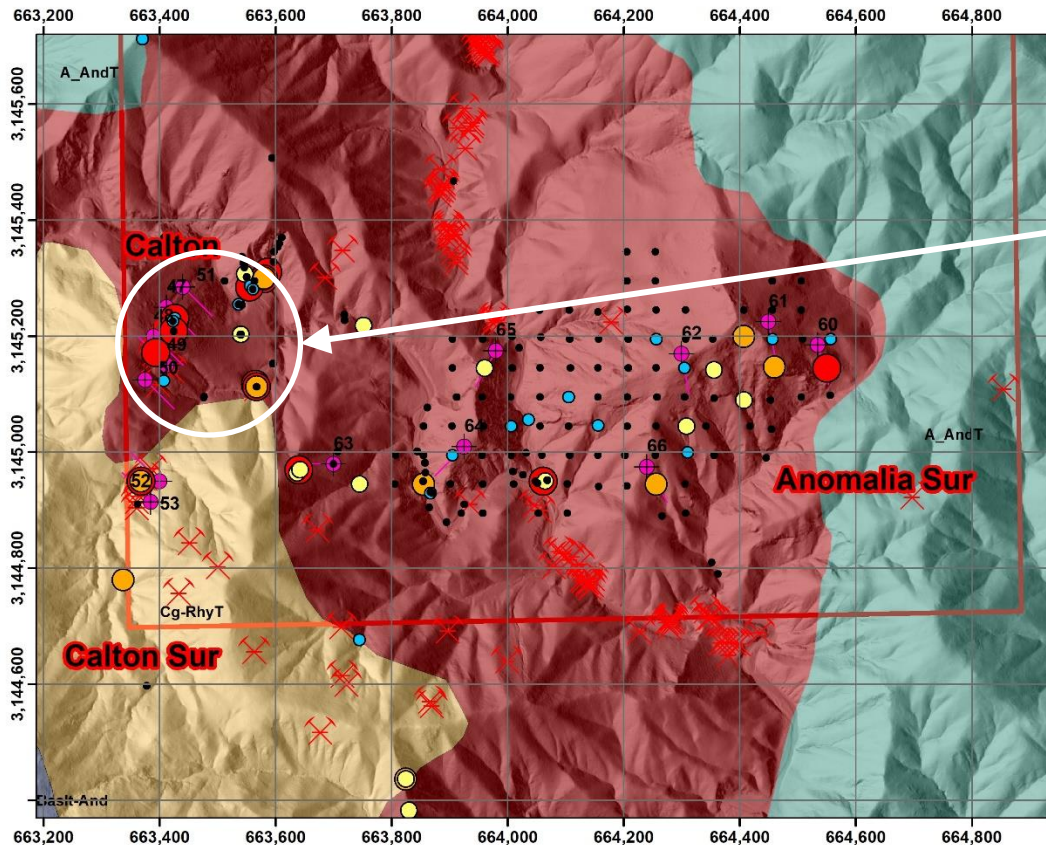
TSX Venture: SSE



Diamante 2022 Rock Sampling

TSX Venture: SSE

Silicified breccia grading 51.5 g/t Au from main Calton target. Diamante 2 SW location map on regional geology, graduated Au-Ag symbols.



Coordinate System: WGS 1984 UTM Zone 12N



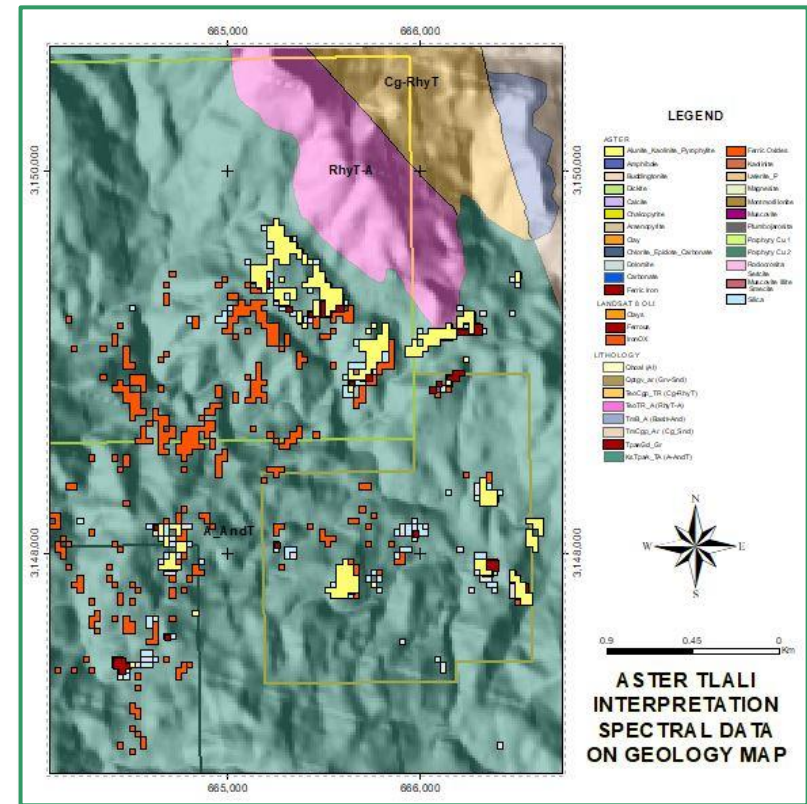
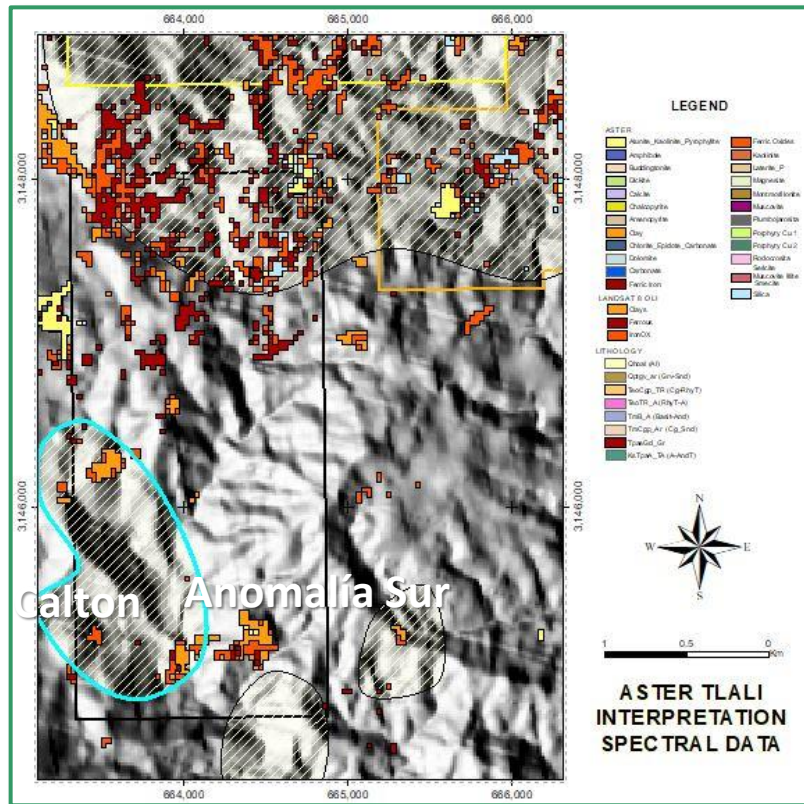
Diamante 2
Geology

April 18, 2022



Diamante 1 & 2 - Exploration Overview

TSX Venture: SSE

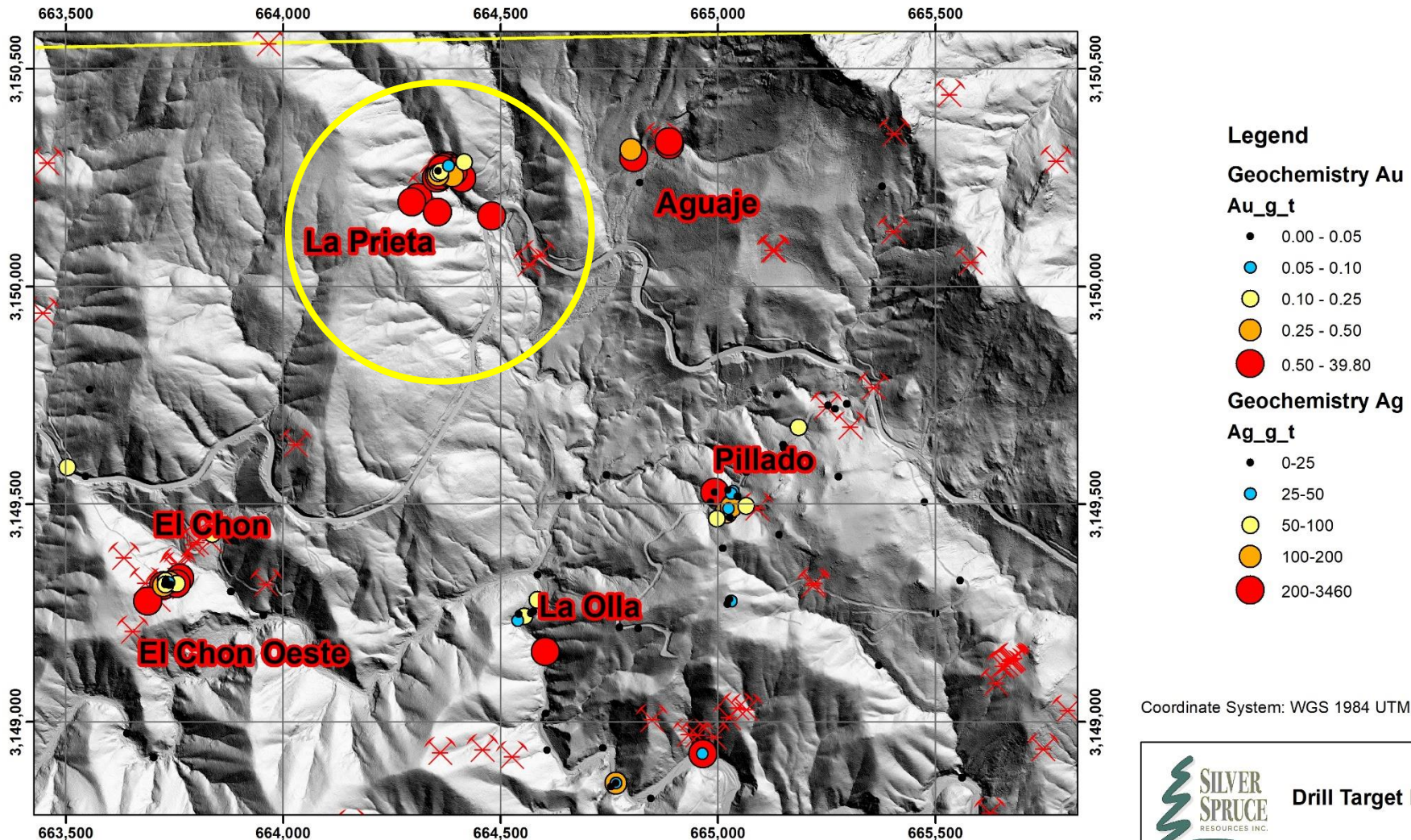


“The TLALI algorithm maps for the LANDSAT 8 OLI and combined LANDSAT 8/ASTER data, respectively, illustrate the spectral response for silicification and argillic alteration, including generic clay, alunite, pyrophyllite, kaolinite and silica, which are in part coincident with known artisanal vein workings e.g., Calton, and disseminated gold targets, such as the Southern Anomaly (Anomalia Sur) both in Diamante 2. New areas with little or no history of exploration also are indicated e.g., ~1 km north of Calton.”



Diamante 1 - Workings and Drill Targets

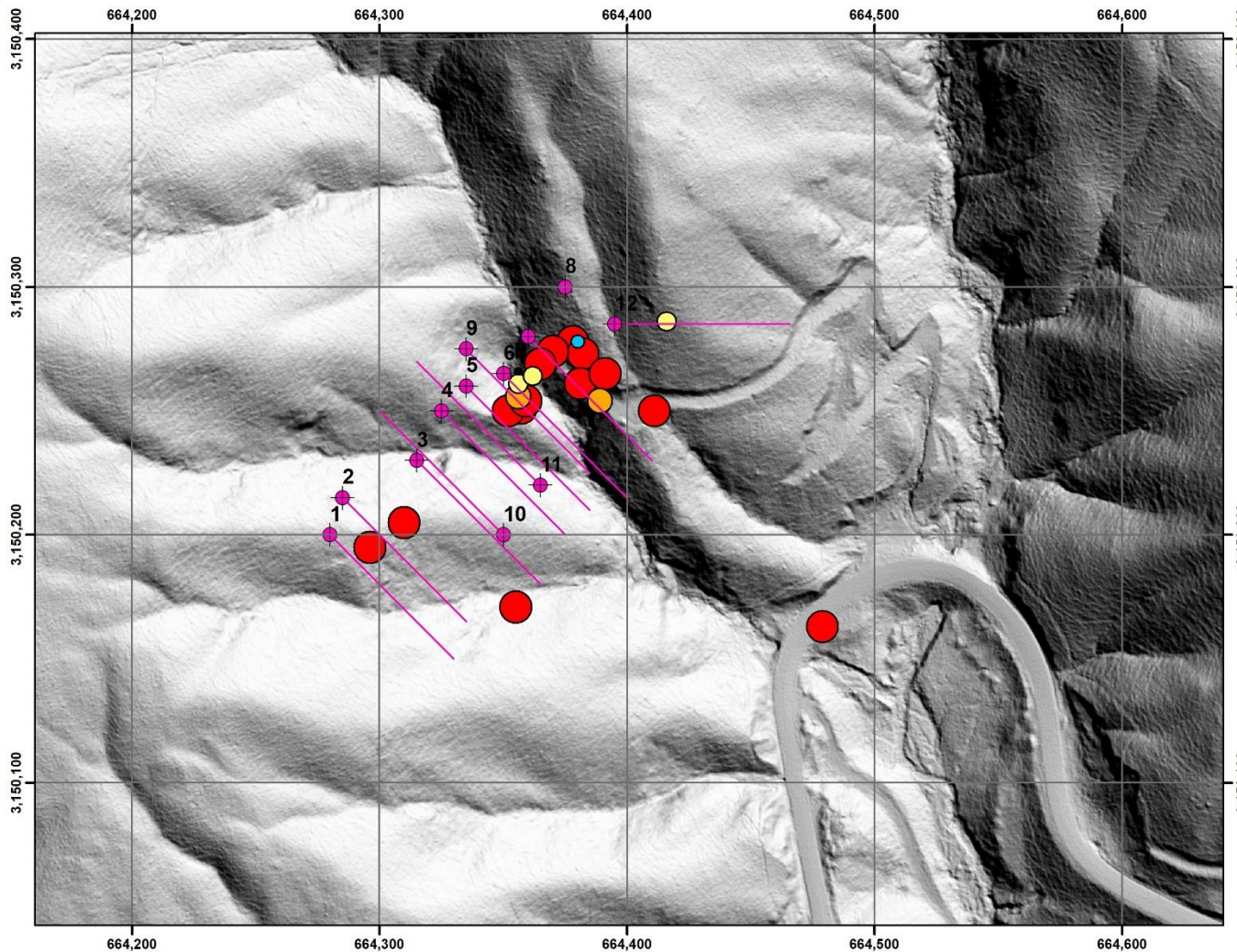
TSX Venture: SSE



Coordinate System: WGS 1984 UTM Zone 12N

Diamante 1 - Phase 1 Drill Exploration

TSX Venture: SSE



Legend

- DIA_DDH_Collar
- DIA_DDH_Trace

Diamante_JAN_4_2022

Ag_g_t

- 0-25
- 25-50
- 50-100
- 100-200
- 200-3460

Diamante_JAN_4_2022

Au_g_t

- 0.00 - 0.05
- 0.05 - 0.10
- 0.10 - 0.25
- 0.25 - 0.50
- 0.50 - 39.80

Coordinate System: WGS 1984 UTM Zone 12N

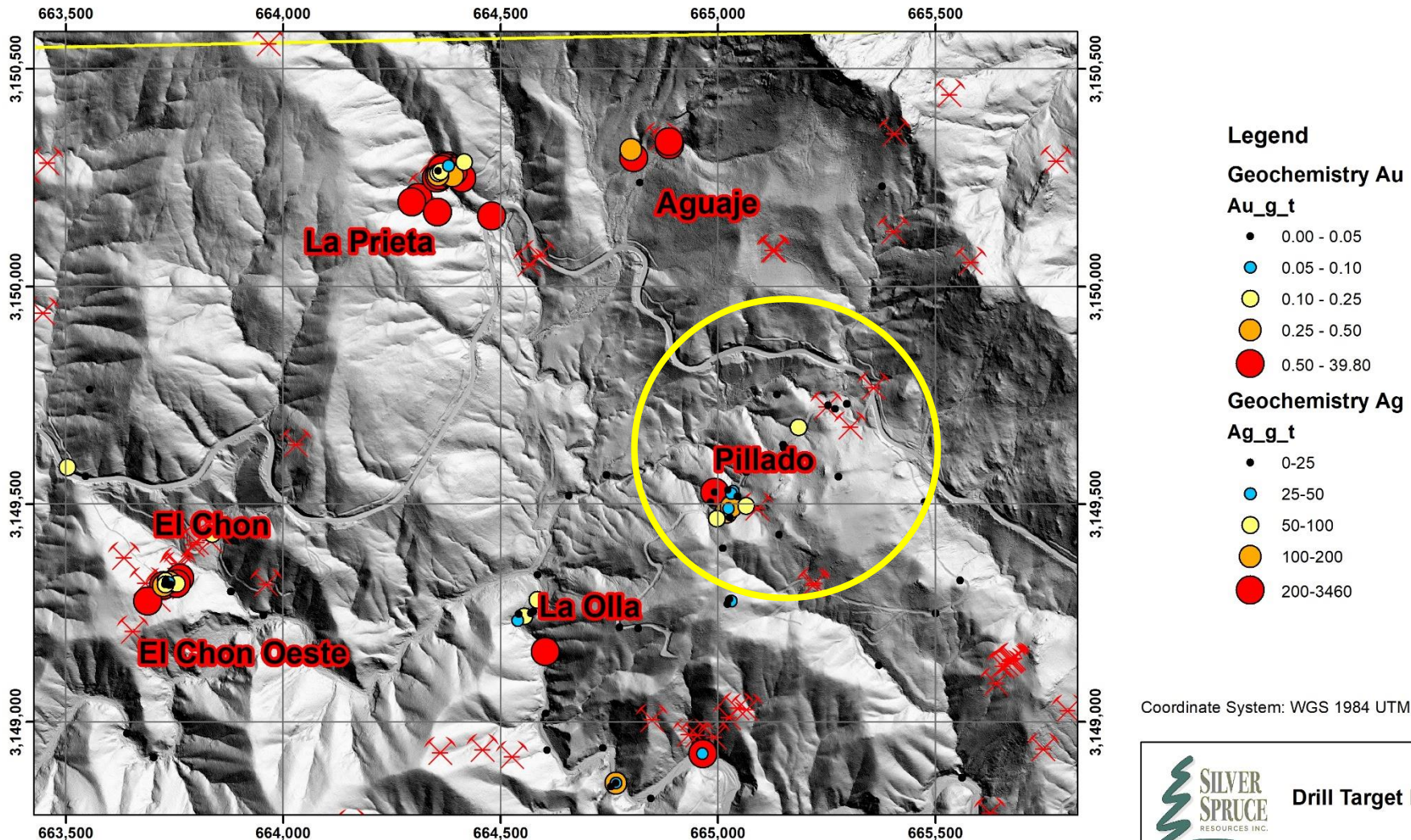


Diamante Project

February 13, 2022

Diamante 1 - Workings and Drill Targets

TSX Venture: SSE



Coordinate System: WGS 1984 UTM Zone 12N

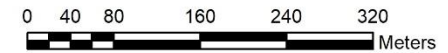
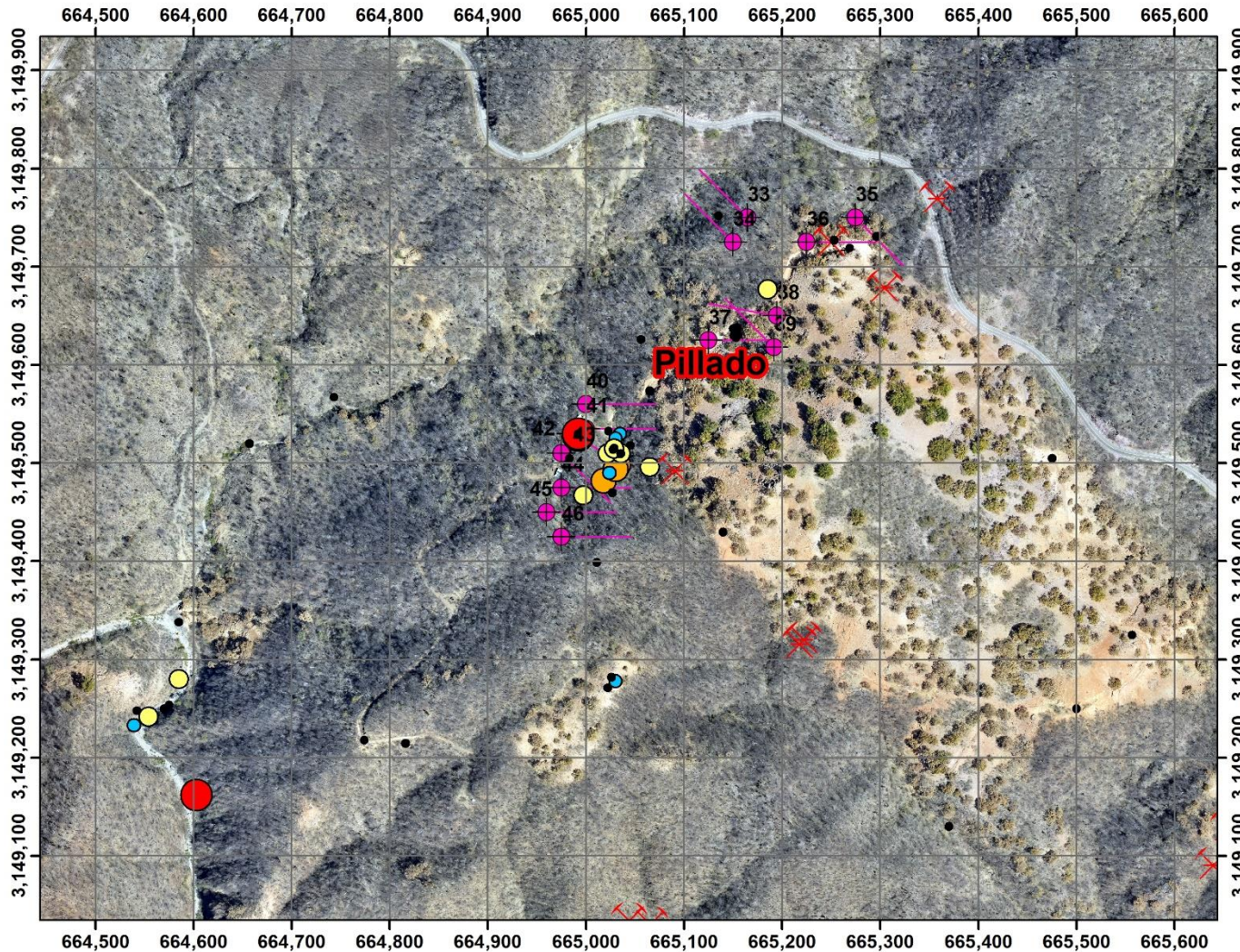


Drill Target Map

February 23, 2022

Diamante 1 - Phase 1 Drill Exploration

TSX Venture: SSE



Coordinate System: WGS 1984 UTM Zone 12N

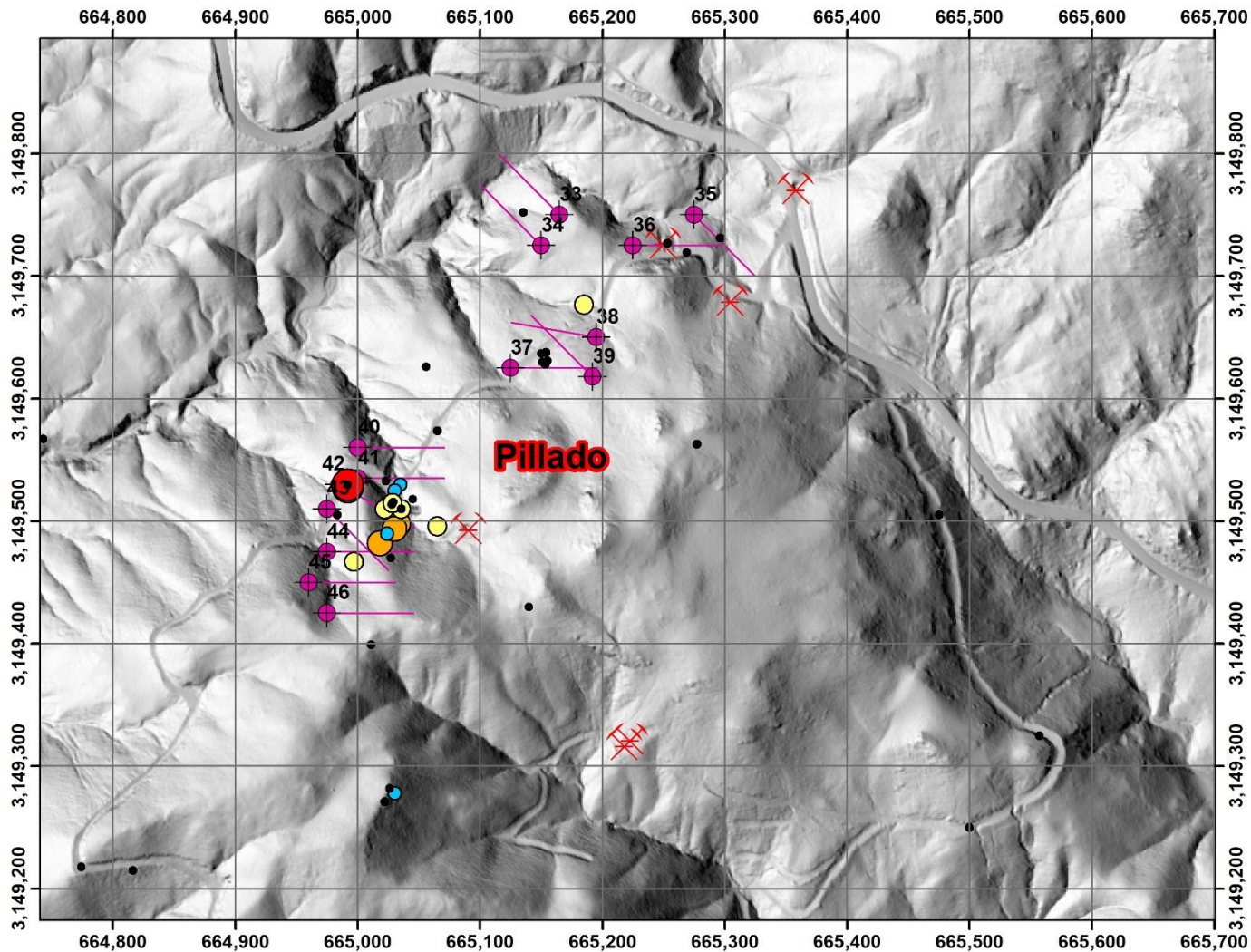


**Diamante 1
Drill Planning**

May 06, 2022

Diamante 1 - Phase 1 Planned Drill Exploration

TSX Venture: SSE



Coordinate System: WGS 1984 UTM Zone 12N



**Diamante 1
Drill Planning**

May 06, 2022

Diamante 1 - 2022 Drilling Program

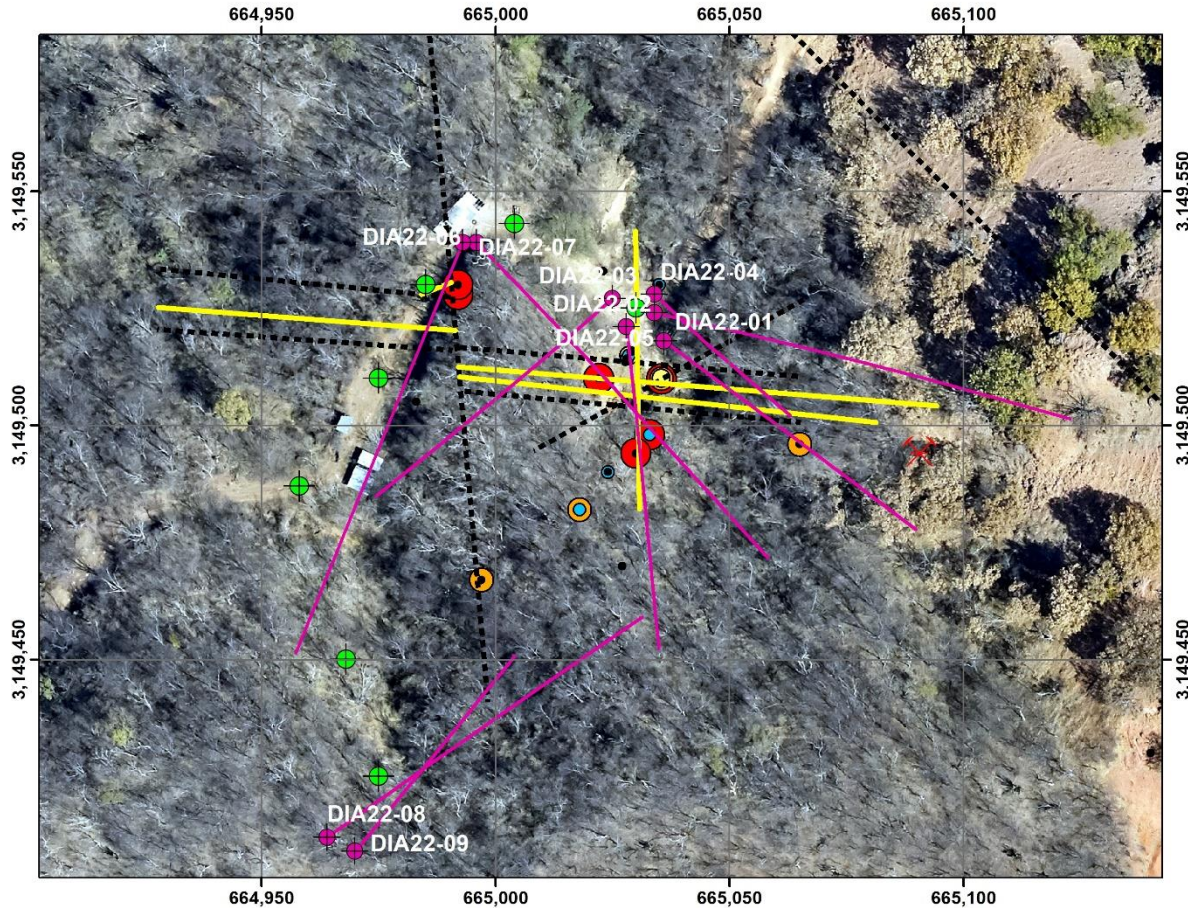
TSX Venture: SSE

Target	Hole ID	Location			End of Hole	Orientation		Date	
		East	North	Elevation		Azimuth	Dip	Start	Finish
EL PILLADO TARGET	DIA22-01	665036	3149518	866	102	135°	45°	16-Jun	17-Jun
EL PILLADO TARGET	DIA22-02	665028	3149521	861	105	180°	45°	17-Jun	18-Jun
EL PILLADO TARGET	DIA22-03	665025	3149527	866	102	225°	45°	18-Jun	19-Jun
EL PILLADO TARGET	DIA22-04	665034	3149528	895	108	135°	70°	19-Jun	20-Jun
EL PILLADO TARGET	DIA22-05	665034	3149524	906	129	105°	45°	20-Jun	21-Jun
EL PILLADO TARGET	DIA22-06	664996	3149539	879	129	135°	45°	22-Jun	22-Jun
EL PILLADO TARGET	DIA22-07	664993	3149539	870	126	200°	45°	23-Jun	23-Jun
EL PILLADO TARGET	DIA22-08	664964	3149412	938	135	60°	50°	24-Jun	25-Jun
EL PILLADO TARGET	DIA22-09	664970	3149409	942	129	45°	60°	25-Jun	26-Jun
LA PRIETA TARGET	DIA22-10	664349	3150306	914	102	105°	55°	27-Jun	28-Jun
LA PRIETA TARGET	DIA22-11	664340	3150304	930	86	130°	55°	28-Jun	30-Jun
LA PRIETA TARGET	DIA22-12	664343	3150306	945	81	165°	55°	1-Jul	2-Jul
LA PRIETA TARGET	DIA22-13	664338	3150302	933	90	185°	50°	2-Jul	4-Jul
LA PRIETA TARGET	DIA22-14	664316	3150276	960	125	160°	55°	5-Jul	6-Jul
LA PRIETA TARGET	DIA22-15	664315	3150274	965	126	185°	55°	6-Jul	8-Jul
LA PRIETA TARGET	DIA22-16	664387	3150314	940	101	180°	75°	8-Jul	9-Jul
LA PRIETA TARGET	DIA22-17	664387	3150315	940	87	150°	65°	9-Jul	11-Jul
LA PRIETA TARGET	DIA22-18	664389	3150311	935	72	130°	75°	11-Jul	12-Jul
LA PRIETA TARGET	DIA22-19	664386	3150316	935	72	90°	75°	12-Jul	12-Jul



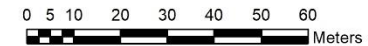
Diamante 1 - 2022 El Pillado Drilling

TSX Venture: SSE



Legend

- El Pillado 2022 Collar
- El Pillado 2022 Trace
- DIA Proposed Collars
- Vein
- Normal_Fault



Coordinate System: WGS 1984 UTM Zone 12N



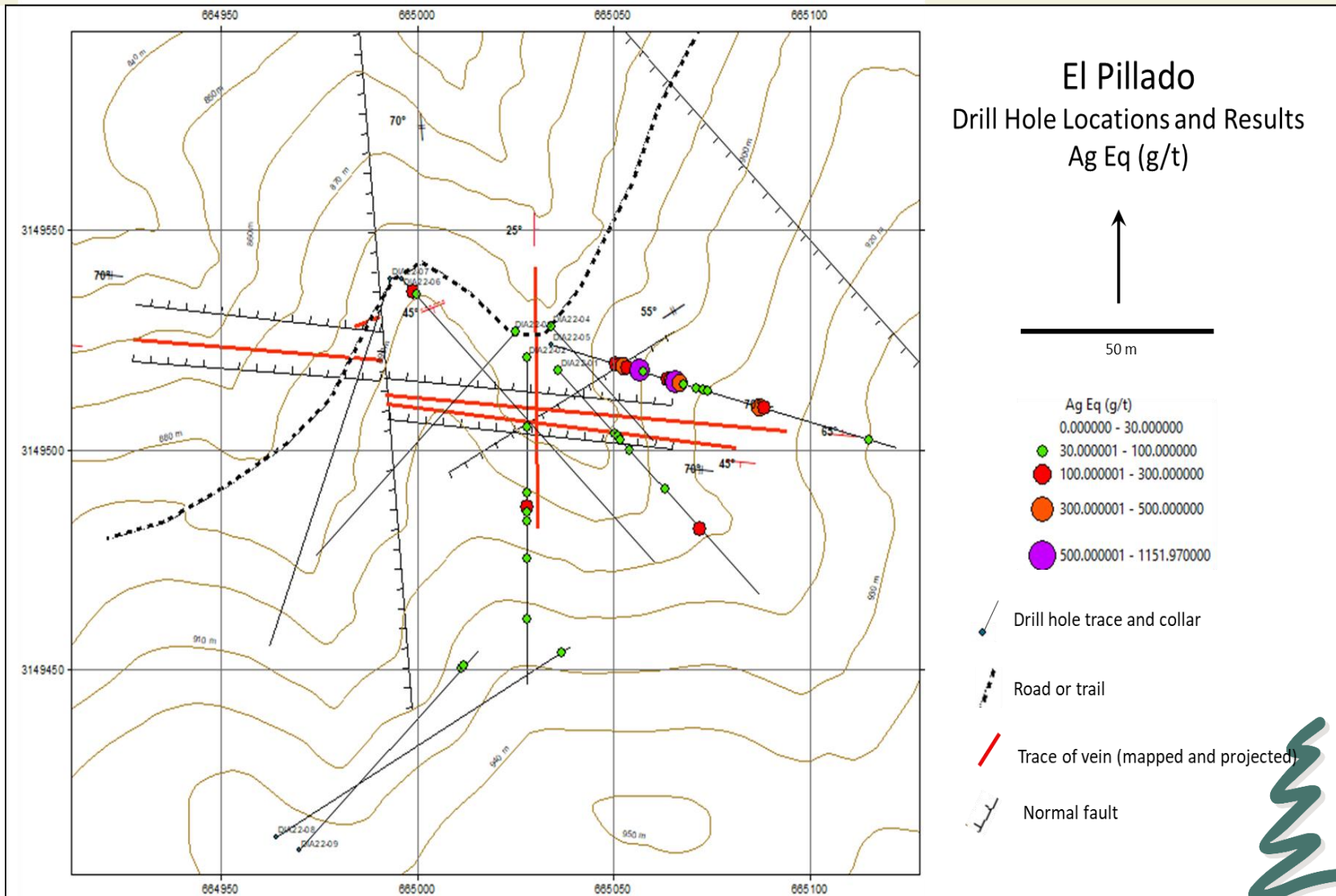
**Diamante 1
Exploration**

August 20, 2022



Diamante 1 - El Pillado Drilling Results

TSX Venture: SSE



Diamante 1 - El Pillado Drilling Results

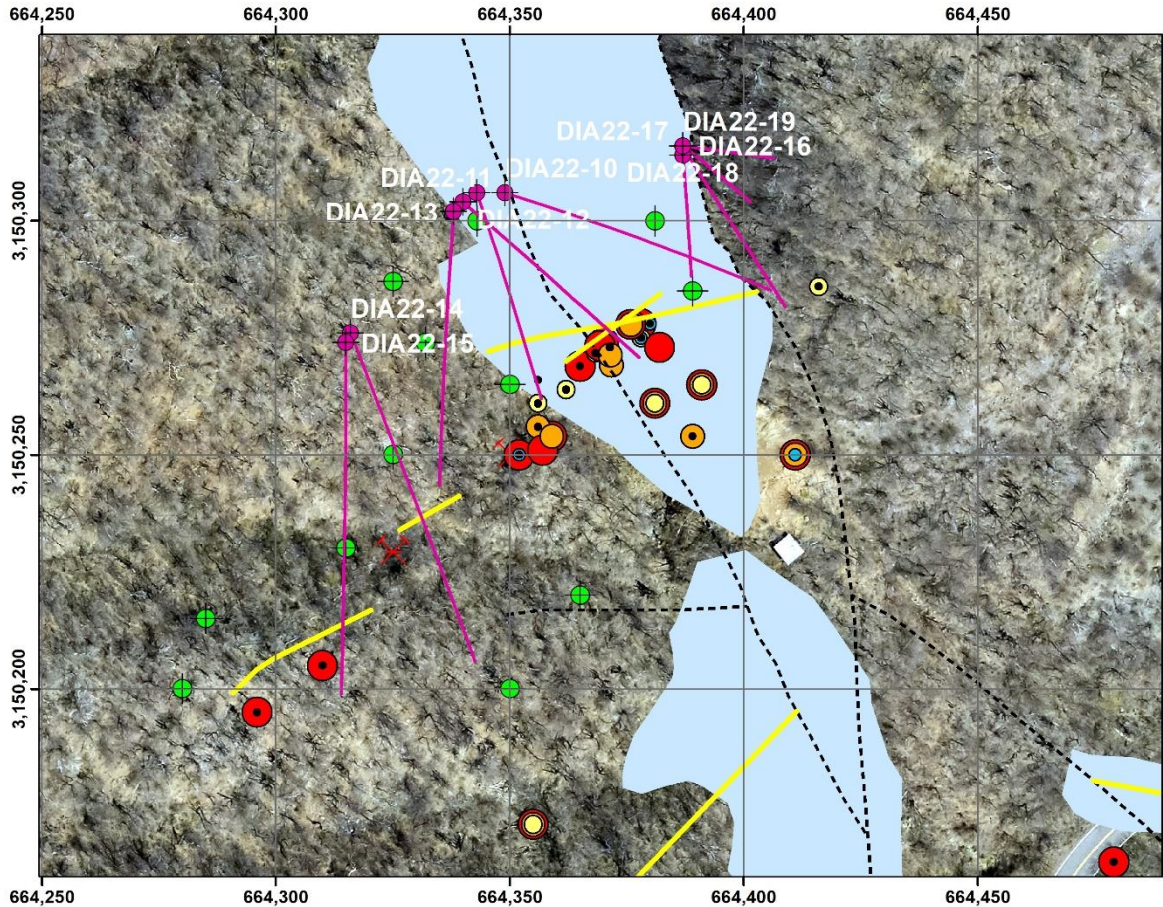
TSX Venture: SSE

Hole ID	From	To	Length	Au (g/t)	Ag (g/t)	Zn (%)	Pb (%)	Ag Eq (g/t)	Au eq (g/t)
DIA22-01	27.0	37.5	10.5	0.04	9.87	0.37	0.12	35.46	0.40
DIA22-01	54.0	55.5	1.5	0.06	7.00	1.06	0.19	69.25	0.78
DIA22-01	72.0	73.5	1.5	0.03	13.50	1.52	0.66	110.35	1.24
DIA22-02	45.0	49.5	4.5	0.05	5.90	1.33	0.02	75.41	0.85
DIA22-02	22.5	24.0	1.5	0.04	4.20	0.48	0.03	31.85	0.36
DIA22-02	43.5	54.0	10.5	0.04	6.27	0.78	0.12	51.71	0.58
includes	48.0	49.5	1.5	0.09	13.20	3.89	0.04	210.87	2.37
DIA22-02	64.5	66.0	1.5	0.03	3.60	0.83	0.04	47.84	0.54
DIA22-02	84.0	85.5	1.5	0.13	15.20	0.66	0.98	88.13	0.99
DIA22-02	84.0	85.5	1.5	0.13	15.20	0.66	0.98	88.13	0.99
DIA22-03	16.5	18.0	1.5	0.20	6.60	0.06	0.01	27.13	0.30
DIA22-04	0.0	1.5	1.5	0.03	6.00	0.75	0.14	49.54	0.56
DIA22-05	24.0	36.0	12.0	0.18	145.49	1.35	1.01	257.63	2.89
includes	24.0	30.0	6.0	0.26	184.50	1.08	0.61	278.51	3.13
includes	33.0	36.0	3.0	0.16	209.10	3.15	2.79	461.65	5.19
includes	33.0	34.5	1.5	0.31	397.00	5.87	5.31	871.62	9.79
DIA22-05	43.5	60.0	16.5	0.21	41.75	2.14	0.68	185.13	2.08
includes	45.0	51.0	6.0	0.15	87.64	4.58	1.45	367.54	4.13
includes	46.5	48.0	1.5	0.21	257.00	7.84	5.23	815.53	9.16
DIA22-05	78.0	81.0	3.0	0.17	26.60	4.19	1.05	276.87	3.11
includes	78.0	79.5	1.5	0.27	35.80	6.91	1.60	443.58	4.98
DIA22-05	99.0	100.5	1.5	0.25	1.90	0.08	0.04	29.35	0.33
DIA22-05	118.5	120.0	1.5	0.04	12.20	0.43	0.34	46.96	0.53
DIA22-06	6.0	10.5	4.5	0.06	28.73	0.24	0.52	61.39	0.69
includes	6.0	7.5	1.5	0.07	60.40	0.20	1.21	113.45	1.27
DIA22-08	130.5	132.0	1.5	0.93	2.20	0.03	0.02	87.20	0.98
DIA22-09	117.0	120.0	3.0	0.11	19.85	0.50	0.09	56.65	0.64



Diamante 1 - 2022 La Prieta Drilling

TSX Venture: SSE



Legend

- LaPrieta 2022 Collar
- LaPrieta 2022 Trace
- DIA Proposed Collars
- Vein
- Normal Fault
- Stockwork zone



Coordinate System: WGS 1984 UTM Zone 12N



**Diamante 1
Exploration**

August 20, 2022



Diamante 1 - La Prieta Drilling Results

TSX Venture: SSE

La Prieta Drill Hole Locations and Results Ag Eq (g/t)



50 m

Ag Eq (g/t)


0.000000 - 30.000000


30.000001 - 100.000000

100.000001 - 300.000000


300.000001 - 500.000000

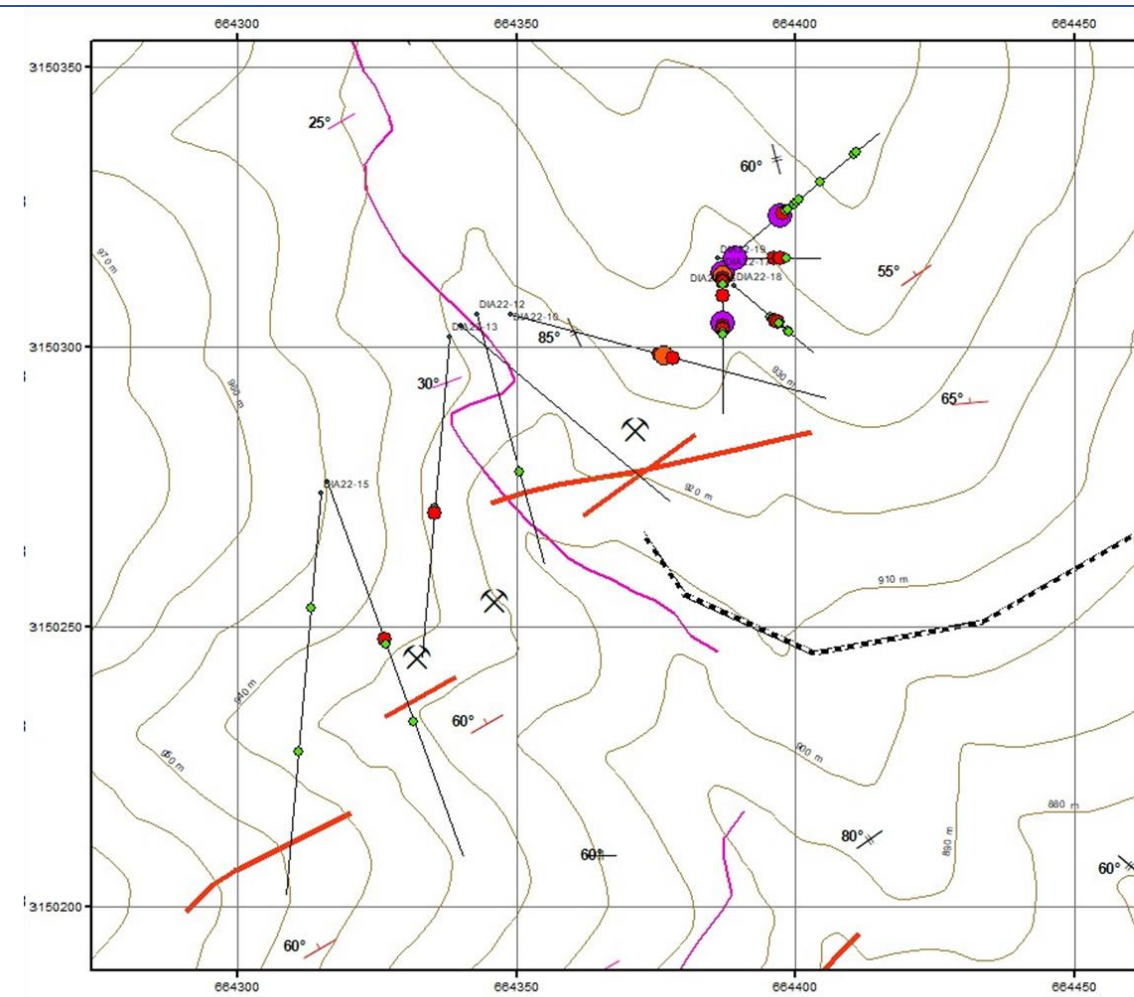
500.000001 - 1151.970000

 Drill hole trace and collar

 Road or trail

 Trace of vein (mapped and projected)

 Normal fault



Diamante 1 - La Prieta Drilling Results

TSX Venture: SSE

Hole ID	From	To	Length	Au (g/t)	Ag (g/t)	Zn (%)	Pb (%)	Ag Eq (g/t)	Au eq (g/t)
DIA22-10	48.0	54.0	6.0	0.46	56.88	1.06	0.53	165.47	1.86
includes	49.5	51.0	1.5	0.87	125.00	2.82	1.45	383.75	4.31
DIA22-11	54.0	55.5	1.5	0.15	4.50	0.16	0.09	28.25	0.32
DIA22-12	51.0	52.5	1.5	0.18	4.80	0.22	0.08	33.71	0.38
DIA22-13	49.5	51.0	1.5	0.31	53.70	1.49	0.39	165.09	1.85
DIA22-14	52.5	55.5	3.0	0.59	16.50	0.46	0.23	98.14	1.10
DIA22-15	36.0	37.5	1.5	0.54	0.25	0.01	0.00	48.70	0.55
DIA22-16	1.5	10.5	9.0	2.48	56.70	0.28	0.71	312.84	3.51
includes	1.5	6.0	4.5	3.87	75.43	0.08	0.97	453.26	5.09
DIA22-16	18.0	19.5	1.5	0.83	18.80	0.68	0.38	136.90	1.54
DIA22-16	36.0	46.5	10.5	0.63	38.49	1.61	0.64	192.52	2.16
includes	37.5	39.0	1.5	1.36	139.00	8.74	2.88	772.12	8.67
DIA22-17	30.0	43.5	13.5	0.56	38.48	1.76	0.76	196.95	2.21
includes	30.0	34.5	4.5	0.94	103.17	4.96	2.19	494.61	5.56
DIA22-17	54.0	57.0	3.0	0.45	1.35	0.04	0.00	43.14	0.48
DIA22-17	72.0	75.0	3.0	0.26	18.65	0.15	0.07	51.50	0.58
DIA22-18	33.0	42.0	9.0	0.55	15.28	0.38	0.16	87.76	0.99
includes	37.5	40.5	3.0	1.07	38.80	0.63	0.35	175.81	1.98
DIA22-18	48.0	51.0	3.0	0.48	11.35	0.08	0.03	59.14	0.66
DIA22-19	10.5	13.5	3.0	1.36	86.80	1.69	0.91	317.91	3.57
includes	12.0	13.5	1.5	2.11	139.00	2.79	1.24	500.06	5.62
DIA22-19	39.0	45.0	6.0	0.64	11.20	0.31	0.21	89.84	1.01
DIA22-19	48.0	49.5	1.5	0.32	7.60	0.24	0.16	52.76	0.59



Diamante - Exploration Summary

TSX Venture: SSE

El Pillado

- ✓ Anomalous values of Pb, Zn, Ag and pathfinders including As, Cd, Cu, Hg and Sb, up to 7.5 metres
- ✓ Confirmed mine target, both shallow and at depth, and given the promising metal grades in DIA22-05 remains open to the east

La Prieta

- ✓ Confirmed mine target, in shallow intersections and at depth, particularly in DIA22-17
- ✓ Warrants further work programs for the polymetallic, intermediate sulphidation mineralization
- ✓ Other high priority targets at Calton, Aguaje, El Chon, Mezquite Raizudo and several others await ground-based activities

Drilling at El Pillado



Diamante - Exploration Plans

TSX Venture: SSE

Phase 2 Program – Part 1

- ✓ Environmental permitting
- ✓ Boots on the ground
- ✓ Ground truthing and rock sampling, geological and structural mapping
- ✓ Verify and prioritize targets for drilling

Phase 2 Program – Part 2

- ✓ Focused drilling on key targets
- ✓ On-site analysis to assist dynamic planning
- ✓ Drill up to 4 holes, verify mineralization and move to next target

Drilling at El Pillado



Silver Spruce Resources Inc.

TSX Venture: SSE, USA OTCQB: SSEBF, Frankfurt: S6Q



Suite 440, 1600 Bedford Highway,
Bedford, Nova Scotia, B4A 1E8 Canada

Michael Kinley CEO Director 902-402-0388
Greg Davison PGeo VPX Director 250-521-0444

info@silverspruceresources.com
www.silverspruceresources.com

