

“Seizing Opportunity and Creating Value”



EXPLORING in MEXICO **JACKIE** Au-Ag Project

TSX Venture: SSE
US OTCQB: SSEBF
Frankfurt: S6Q

www.silverspruceresources.com

June 2023



Cautionary Statement

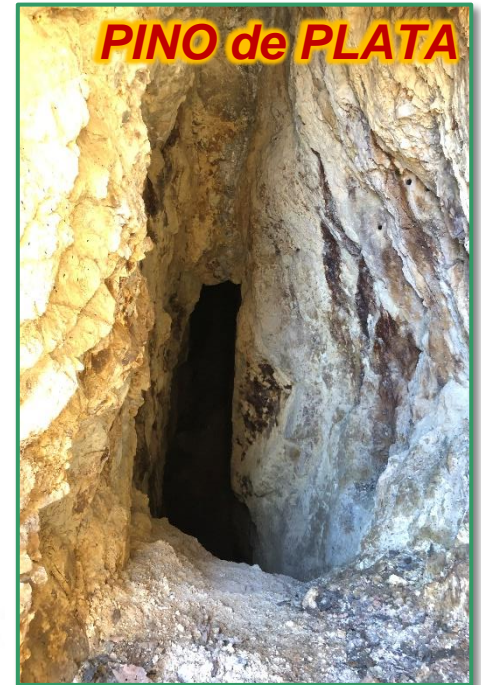
TSX Venture: SSE

Investors are cautioned that, except for statements of historical fact, certain information contained in this document includes "forward-looking information" with respect to a performance expectation for SSE. Such forward-looking statements are based on current expectations, estimates and projections formulated using assumptions believed to be reasonable and involving a number of risks and uncertainties which could cause actual results to differ materially from those anticipated. Such factors include, without limitation, fluctuations in foreign exchange markets, the price of commodities in both the cash market and futures market, changes in legislation, taxation, controls and regulations of national and local governments and political and economic developments in Canada and other countries where SSE carries-out or may carry-out business in the future, the availability of future business opportunities and the ability to successfully integrate acquisitions or operational difficulties related to technical activities of mining and reclamation, the speculative nature of exploration and development of mineral deposits located, including risks in obtaining necessary licences and permits, reducing the quantity or grade of reserves, adverse changes in credit ratings, and the challenge of title. The Company does not undertake an obligation to update publicly or revise any forward-looking statements or information, whether as a result of new information, future events or otherwise, unless so required by applicable securities laws.



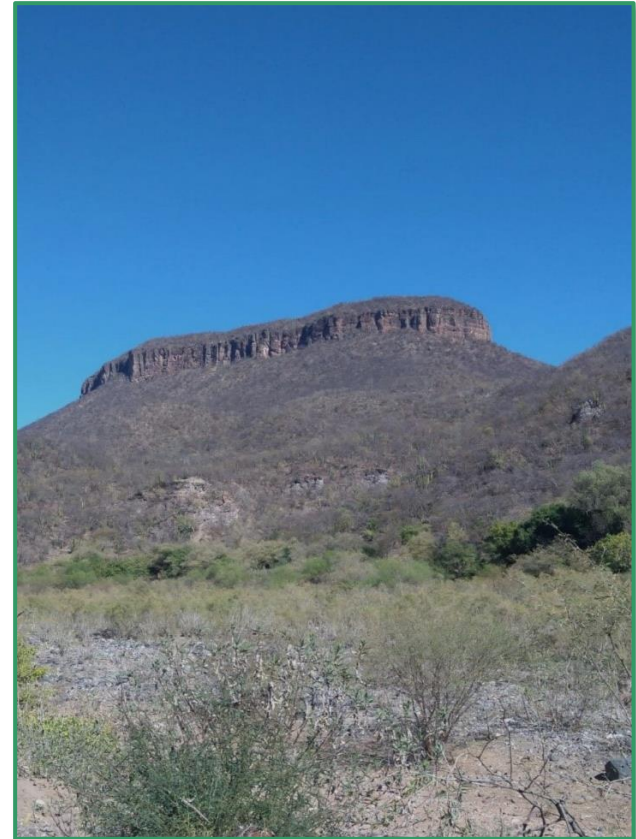
Project Locations - Mexico

TSX Venture: SSE



TSX Venture: SSE

Jackie Au-Ag Project, Sonora, Mexico



Mexico - The Potential

TSX Venture: SSE

- ✓ Located within northwest-trending “Sonora Gold Belt” in Sierra Madre and parallel to Au-Ag-rich Mojave-Sonora Megashear
- ✓ Properties well located near Coeur’s Palmarejo Au-Ag Mine, Minera Alamos’ Santana/Nicho Au Mine and others
- ✓ **Diamante - Ten showings** with many high-grade Au-Ag values on multiple vein, skarn and porphyry targets
- ✓ **Jackie - Greenfields Au-Ag** discovery over 200m x 400m target in 2021; low to high grade opportunity
- ✓ **Pino de Plata - Twelve Ag-Pb-Zn targets**; disseminated epithermal, replacement and skarn carbonate, and veins
- ✓ Low to high grade precious metals and base metals provide discrete opportunities for in-house or partnered development



Project Overview - Mexico

TSX Venture: SSE

- ✓ **Jackie** - There is **no prior exploration** reported on the Property. High Au-Ag assays to **9.65 g/t Au and 515 g/t Ag** in new discovery.
- ✓ **Diamante** - **Ten known showings** at La Prieta-El Aguaje, El Chon, El Pillado, La Olla, Lupita, Mezquite Raizudo, El Puerto, El Cumbro, Calton and Anomalía Sur
- ✓ Historical sampling has reported outstanding values up to **39.8 g/t Au, 3,460 g/t Ag, 18.2% Pb and 33.5% Zn** from mine dumps, slag, and vein and stockwork
- ✓ SSE due diligence assays range from 0.127 g/t Au to 1.195 g/t Au associated with up to 837 g/t Ag and 6.87% Zn with Cu, Pb and well-defined heavy metal pathfinder elements
- ✓ **El Mezquite** - **Historical artisanal mining** in highly altered and oxidized andesites, rhyolitic breccias and veins, coincident chargeability highs, geochemical and structural trends with up to **3.41 g/t Au and 387 g/t Ag**

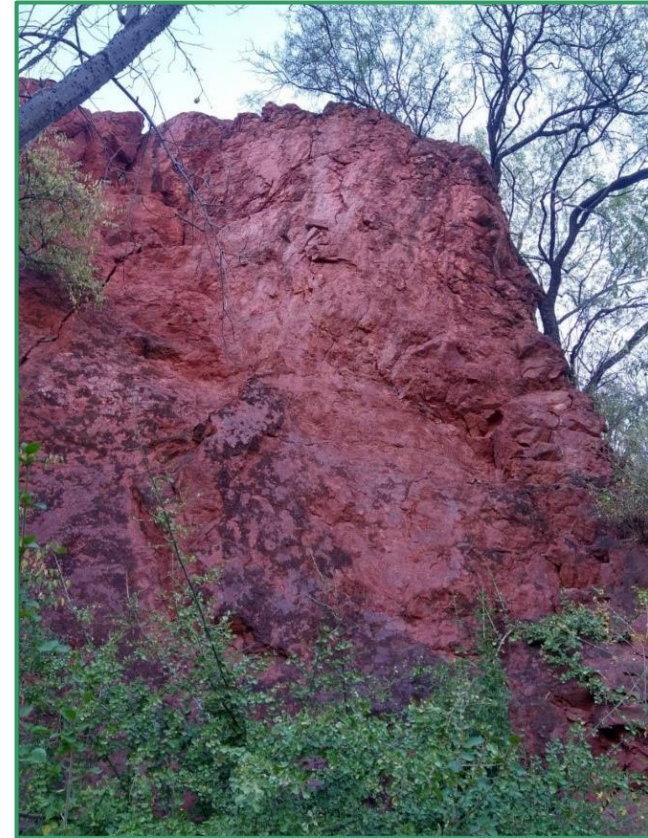


Jackie - The Property

TSX Venture: SSE

- ✓ Located 52km SW of Mulatos and 60km SW of La India Mines in very productive region of the Sierra Madre Occidental gold-silver belt
- ✓ Road and trail-accessible concessions comprising 1,130 hectares located 170km SE of Hermosillo
- ✓ **Exploration Target is low grade, large tonnage, heap leachable deposit**
- ✓ **No record of historical exploration**
- ✓ West and adjacent to Minera Alamos' Santana/Nicho mine

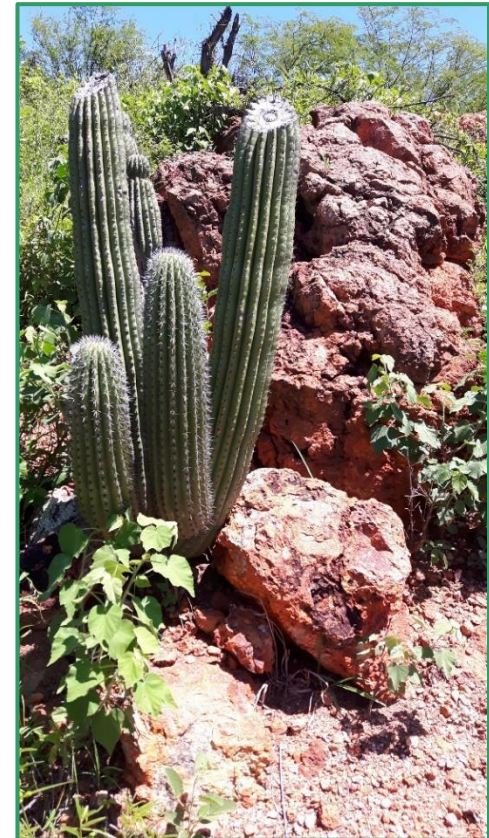
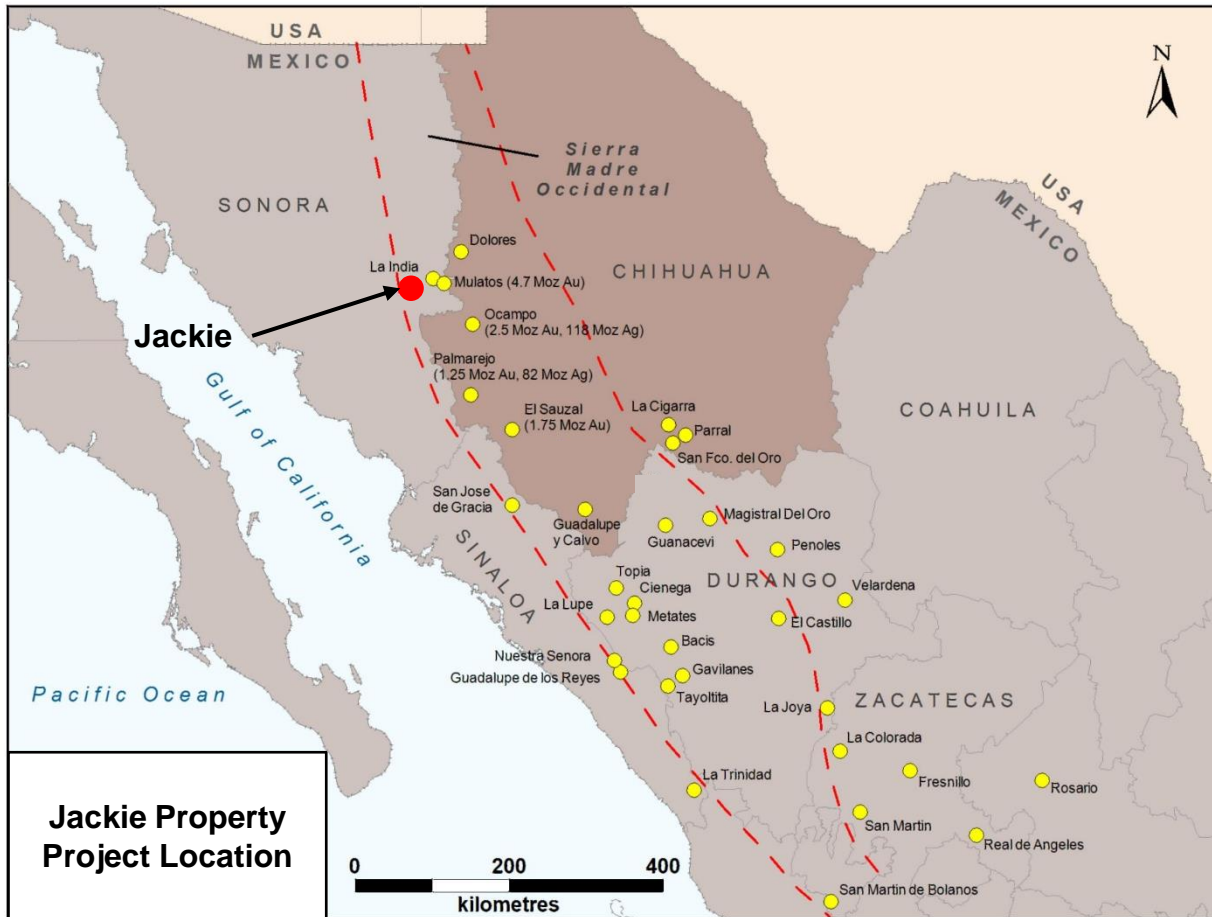
- ✓ Option Agreement completed to earn 50% interest; joint venture documents signed
- ✓ **Phase 1 and 2 expenditures completed**
- ✓ **Final cash and share payment completed Nov 21**
- ✓ **Phase 1 trenching planned for Q2 2022**



Project Location

Sierra Madre Occidental - Sonora

TSX Venture: SSE



Jackie - Exploration and Plans

TSX Venture: SSE

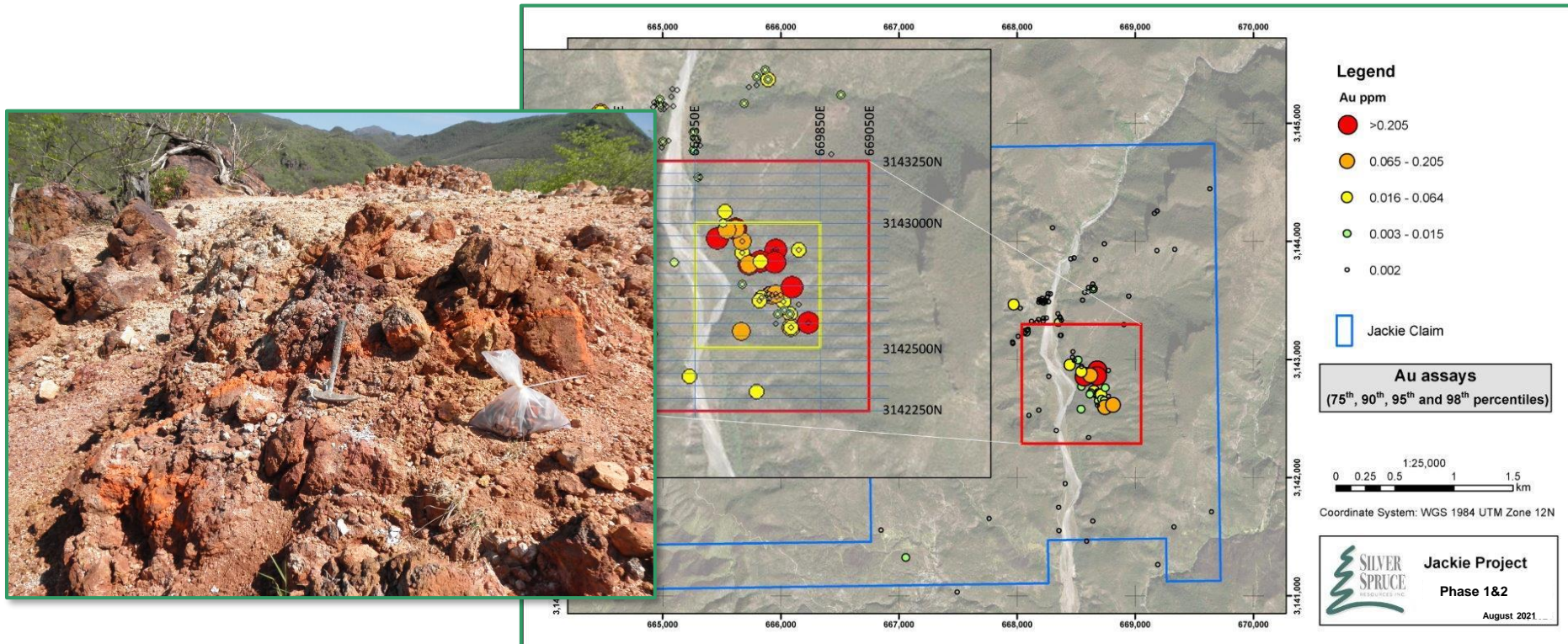
- ✓ Recent Au, multi-element and hyperspectral analysis of 310 rock samples in Phase 1 and 2 programs
- ✓ Phase 1 prospecting identifies new Au-Ag target **up to 9.56 g/t Au and 515 g/t Ag**
- ✓ Phase 2 mapping extends mineralization to 200m x 400m area with open NW trend, samples to **4.15 g/t Au and 100 g/t Ag**
- ✓ Regional hyperspectral ASTER and Landsat 8 OLI interpretation
- ✓ LiDAR survey completed to provide high resolution topography and imagery
- ✓ **Design plans for trenching**
- ✓ **Design plans for 2,000m Phase 1 drilling on principal targets**
- ✓ **Environmental report completed, received trench and drill permits, updates pending**
- ✓ **Trenching planned in Q2 2023**



Phase 1 sample pit 9.56 g/t Au, 515 g/t Ag
Intense zeolite, clay, jarosite 'argillic' alteration

Jackie - Exploration Quote

TSX Venture: SSE

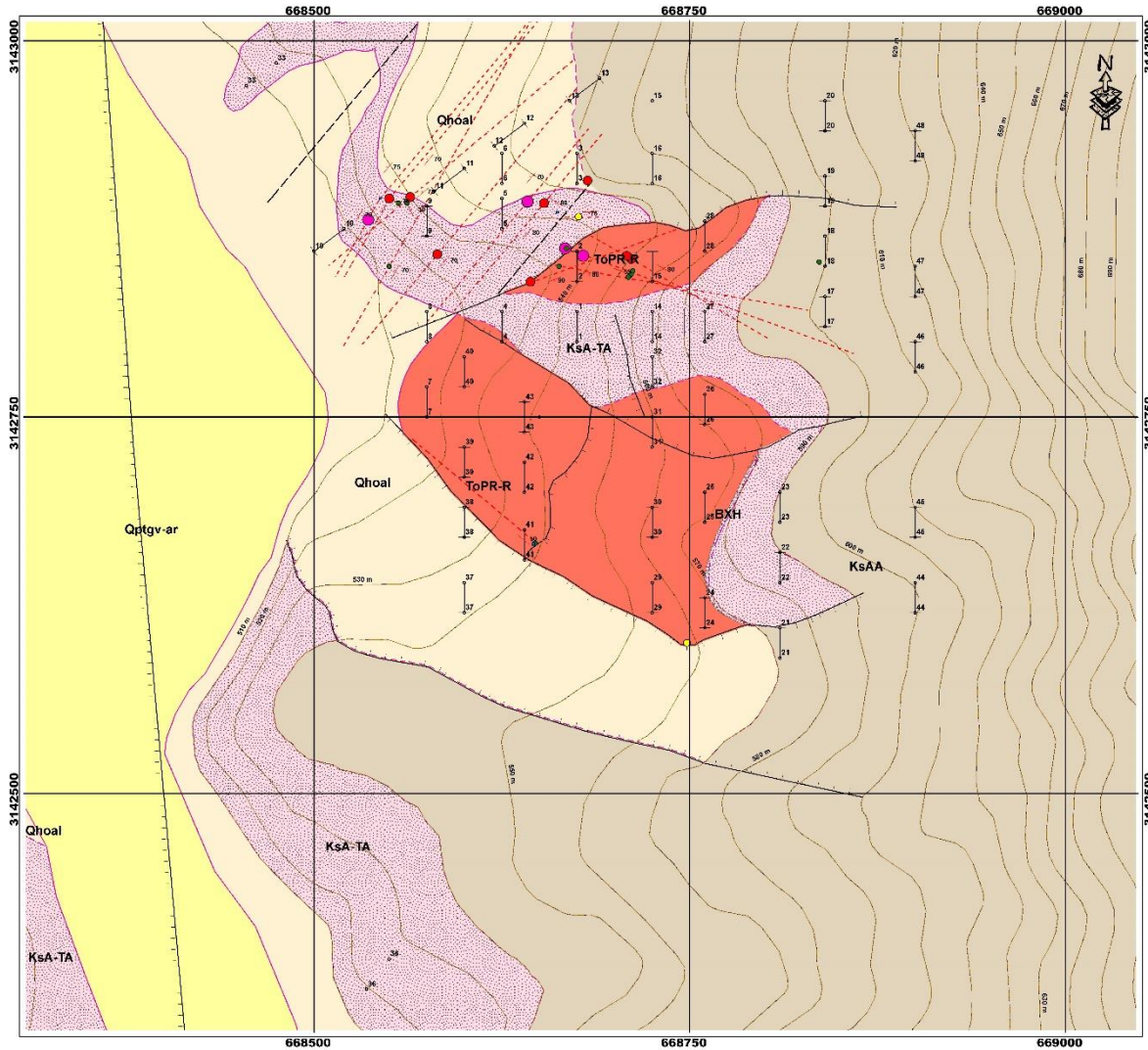


“We are excited about the potential for Jackie given the positive results and an original discovery with our early exploration campaigns. The intense silicate and oxide alteration with high-grade precious metal values ranging up to 9.65 g/t Au and 515 g/t Ag in Phase 1, and up to 4.15 g/t Au and 100 g/t Ag in separate Phase 2 samples, verified and extended the target area anomaly. A northwesterly trend running parallel to structural lineaments provides new untested targets for follow-up sampling and Phase 1 drilling.”



Jackie - Geological Mapping

TSX Venture: SSE



Geological mapping and sample values for the Jackie gold & silver project. Trenches proposed by Silver Spruce

LEGEND

Rock Units

Rock Type

- ALUVION
- GRAVA - ARENA
- BRECCIA
- PRIOLOTICO - RIOLITA
- AGLOMERADO ANDESITICO
- ANDESITA-TOBA ANDESITICA

SIMBOLOGY

Samples Values

AuEq_ppm

- <100
- 0.100 - 0.250
- 0.250 - 0.500
- 0.500 - 1.000
- >1.000

- Inferred mineralized zone
- Veins
- Vein Trend
- Elevation
- Final Trenches
- Faults
- Inferred Lithological contact
- Lithological contact

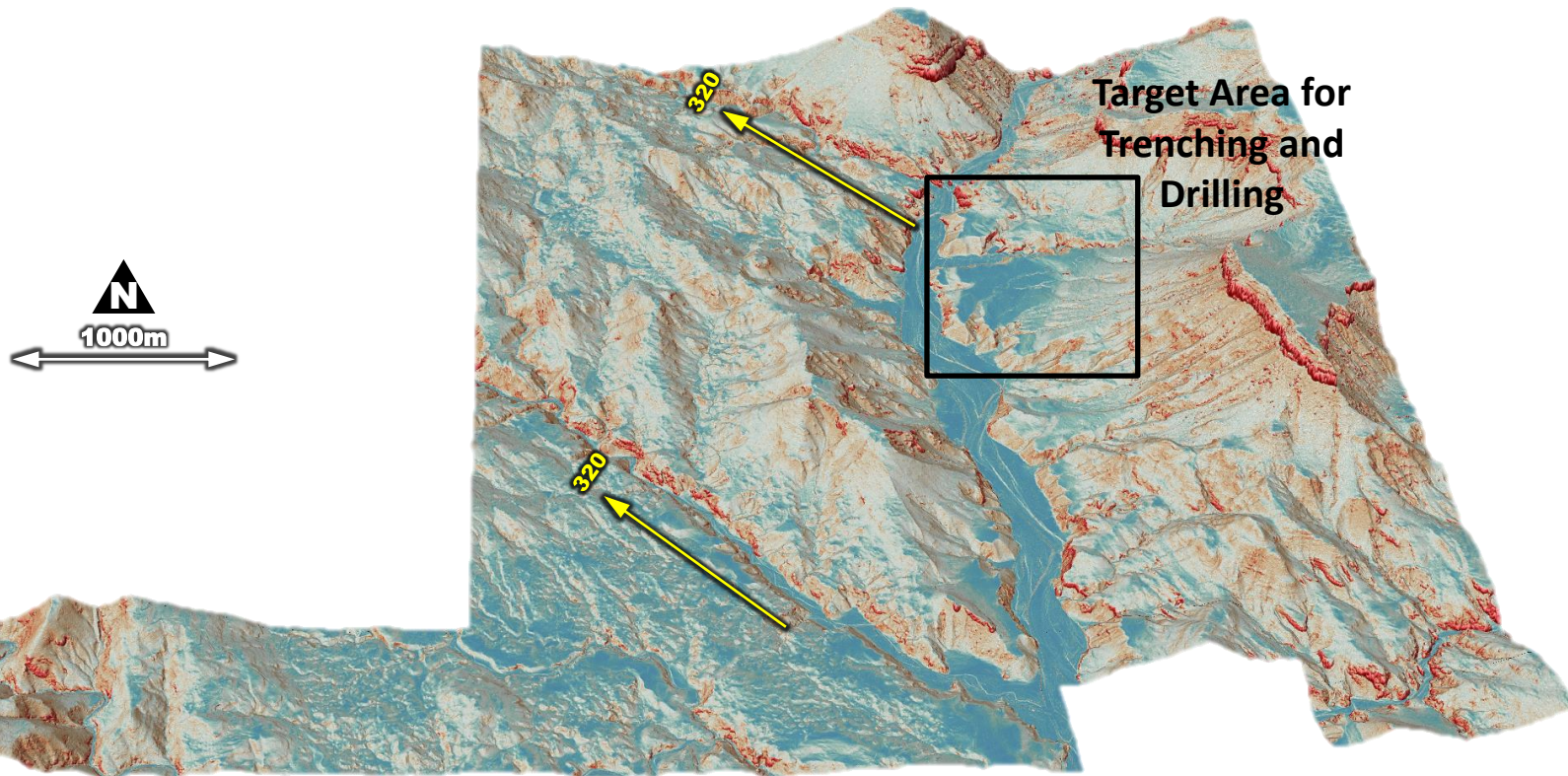
Coordinate System: WGS 1984 UTM Zone 12N
 Projection: Transverse Mercator
 Datum: WGS 1984
 False Easting: 500,000.0000
 False Northing: 0.0000
 Central Meridian: -111.0000
 Scale Factor: 0.9996
 Latitude Of Origin: 0.0000
 Units: Meter
 Author: Ing. Miguel Corrales

0 30 60 120 Meters
1:1,200



Jackie - Exploration and Plans

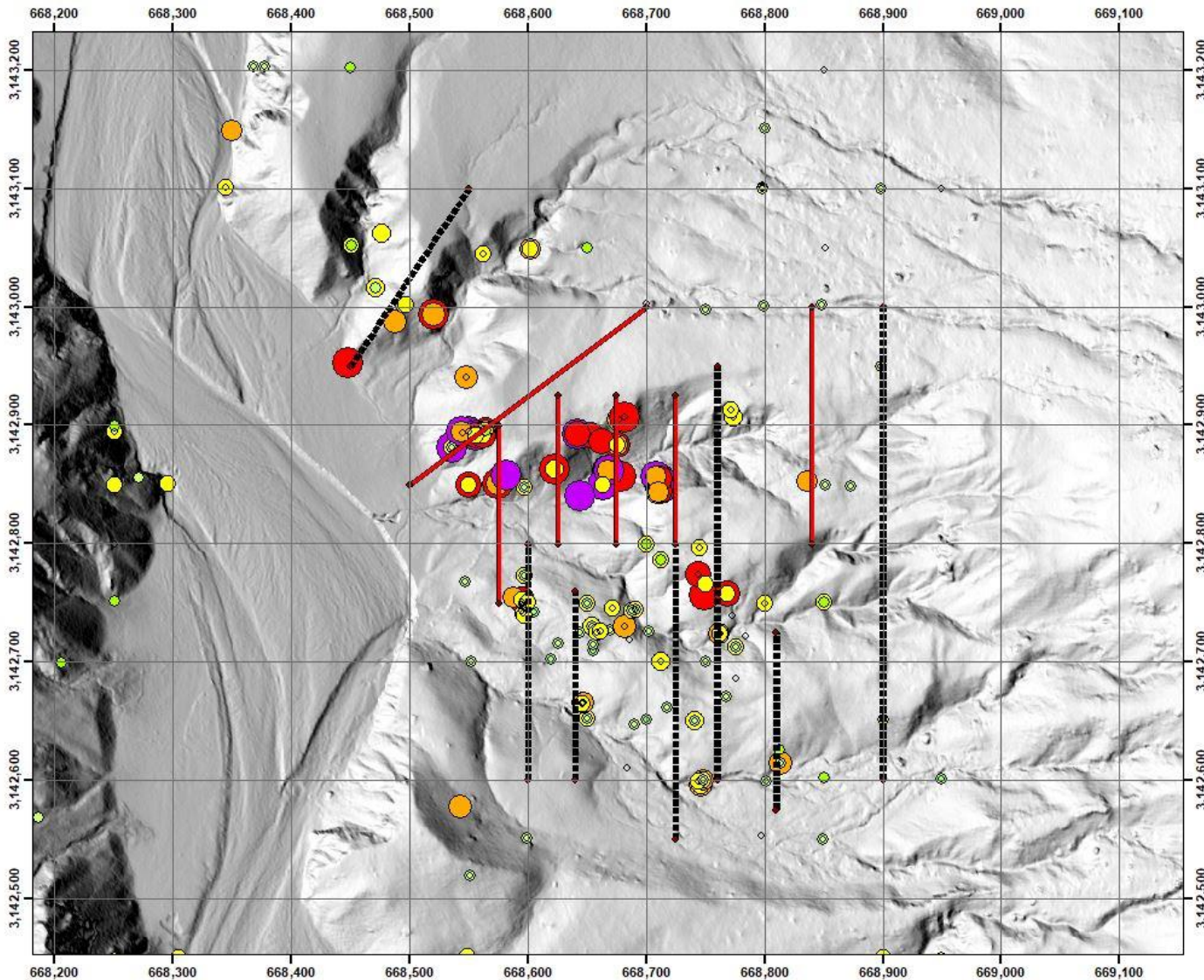
TSX Venture: SSE



LiDAR enhanced digital elevation map with drill targets looking south across Jackie property

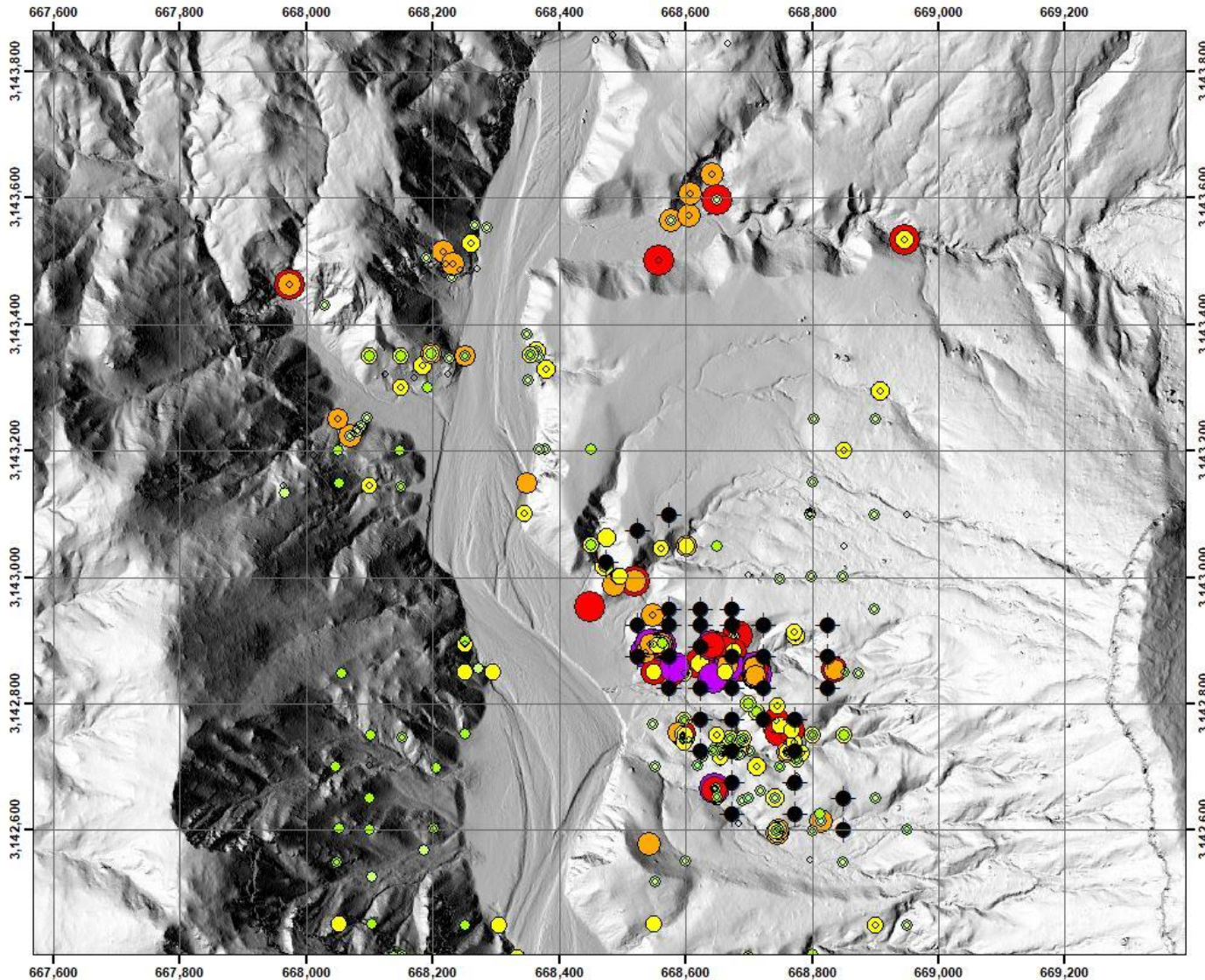
Jackie - Sampling, Proposed Phase 1 Trenching

TSX Venture: SSE



Jackie - Sampling, Proposed Phase 1 Drilling

TSX Venture: SSE



Silver Spruce Resources Inc.

TSX Venture: SSE, USA OTCQB: SSEBF, Frankfurt: S6Q



Suite 440, 1600 Bedford Highway,
Bedford, Nova Scotia, B4A 1E8 Canada

Michael Kinley CEO Director 902-402-0388
Greg Davison PGeo VPX Director 250-521-0444

info@silverspruceresources.com
www.silverspruceresources.com

