

“Seizing Opportunity and Creating Value”



EXPLORING THE DRILL-READY **MELCHETT LAKE** VMS-Au, ONTARIO,
PINO de PLATA Ag-Pb-Zn AND **EL MEZQUITE** Au-Ag PROJECTS, MEXICO

TSX Venture: SSE
US NASDAQ: SSEBF
Frankfurt: S6Q

www.silverspruceresources.com

DEC 2020



Cautionary Statement

TSX Venture: SSE

Investors are cautioned that, except for statements of historical fact, certain information contained in this document includes "forward-looking information" with respect to a performance expectation for SSE. Such forward-looking statements are based on current expectations, estimates and projections formulated using assumptions believed to be reasonable and involving a number of risks and uncertainties which could cause actual results to differ materially from those anticipated. Such factors include, without limitation, fluctuations in foreign exchange markets, the price of commodities in both the cash market and futures market, changes in legislation, taxation, controls and regulations of national and local governments and political and economic developments in Canada and other countries where SSE carries-out or may carry-out business in the future, the availability of future business opportunities and the ability to successfully integrate acquisitions or operational difficulties related to technical activities of mining and reclamation, the speculative nature of exploration and development of mineral deposits located, including risks in obtaining necessary licences and permits, reducing the quantity or grade of reserves, adverse changes in credit ratings, and the challenge of title. The Company does not undertake an obligation to update publicly or revise any forward-looking statements or information, whether as a result of new information, future events or otherwise, unless so required by applicable securities laws.



Corporate Overview - 1

TSX Venture: SSE

- ✓ **Silver Spruce Resources Inc.** is a Canadian publicly traded company that trades on the TSX Venture Exchange under the symbol SSE with **105 MM shares outstanding**.
- ✓ The Company has an experienced management team in the areas of exploration, prospect development, corporate finance, legal and public company management.
- ✓ Silver Spruce has signed a definitive option agreement to acquire 100% of the 2,124-hectare **Melchett Lake** project located within an historically active region including Copper Lake's Marshall Lake VMS project.
- ✓ Surface samples at Melchett Lake yielded up to **28.8 g/t Gold and 19% Zinc**.
- ✓ The Company has map staked an additional 1,872 hectares in November 2019 to complete coverage of **Melchett Lake** mineralization reported over 20 km strike length.



Corporate Overview - 2

TSX Venture: SSE

- ✓ Silver Spruce has signed a definitive option agreement to acquire 100% of the 397-hectare **Pino de Plata** project, 15km west from the Coeur Mining's flagship mine at Palmarejo, Chihuahua, that produced 7.5 million ounces of silver and 122,722 ounces of gold in 2018.
- ✓ Surface sampling at Pino de Plata yielded silver grades **over 1,100 g/t Ag** with highly anomalous grades of lead, zinc and gold.
- ✓ Silver Spruce recently signed an option agreement with Colibri Resource to acquire 50% interest in Yaque Minerales S.A de C.V. ("Yaque") which holds the 180-hectare El Mezquite Gold project, 170 km southeast of Hermosillo, Sonora, Mexico.
- ✓ The presence of historical artisanal mining in highly altered and oxidized andesites, rhyolitic breccias and veins, coincident chargeability anomalies, and discrete geochemical and structural trends containing broad areas of elevated precious metal values to **3.41 g/t Au and 198 g/t Ag** clearly define anomalies for detailed exploration and drilling.



Corporate Summary

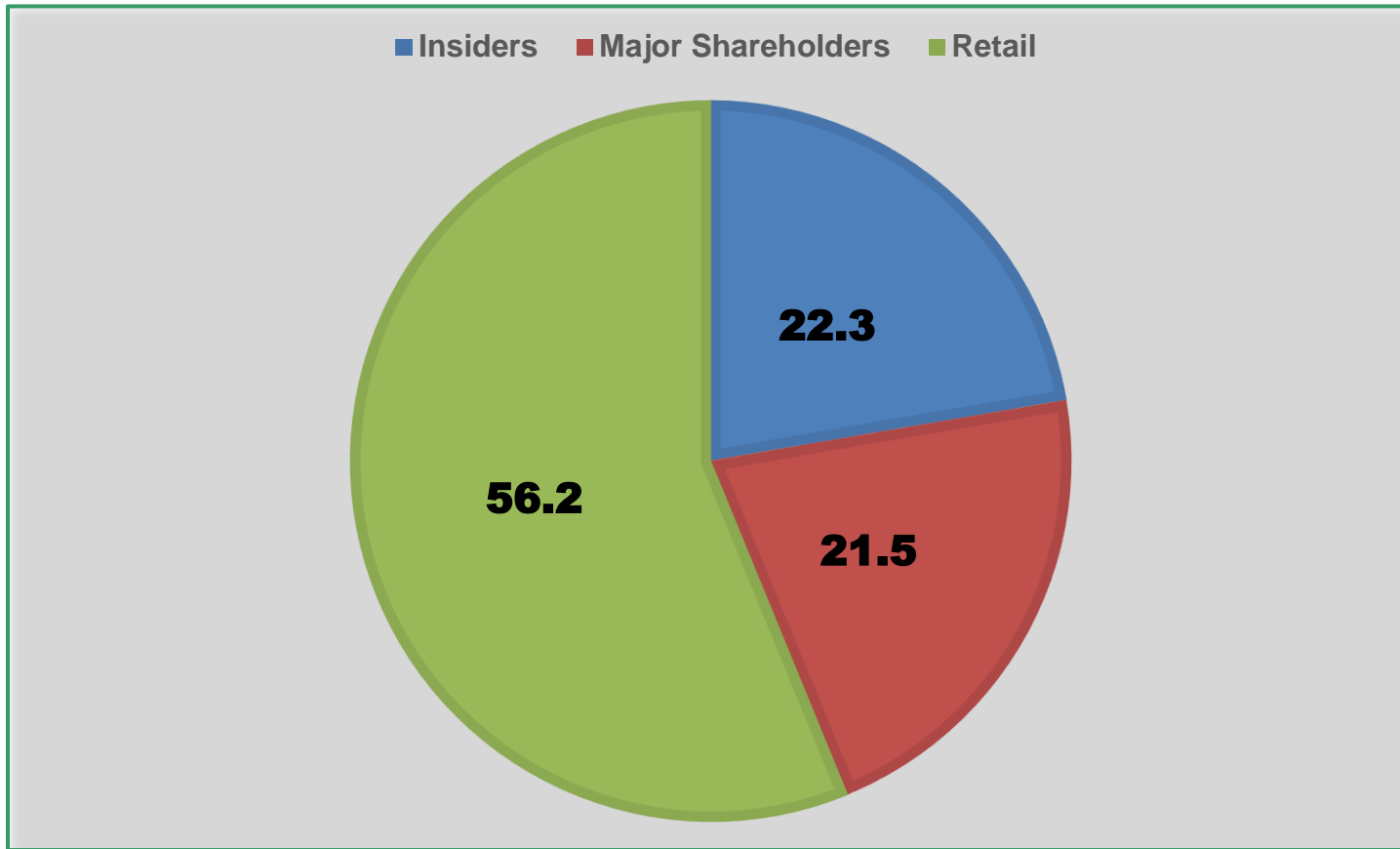
TSX Venture: SSE

June 15, 2020	
Exchange Listings	TSX Venture: SSE FSE: S6Q1 USA: SSEBF
Head office	Bedford, Nova Scotia
Shares Outstanding	105,845,833
Warrants	33,537,841
Options	300,000
Fully diluted	139,683,674
Share Price Range	\$.015 - \$.065
Debt	Nil
Tax Loss Carry Forward	> \$10 M
Bank	Canadian Imperial Bank of Commerce
Auditors	Grant Thornton LLP



Shareholder Breakdown

TSX Venture: SSE



Key Team Members

TSX Venture: SSE

Dr. Brian Penney, PhD, DIC, P.Eng., CEO, Chairman/Director

- ✓ Ph.D.- High energy nuclear physics-Imperial College of Science & Technology, Univ. of London.

Kevin O'Connor, Director

- ✓ Corporate attorney based in Chicago, IL, focused on M&A, Joint Ventures and divestitures.

Greg Davison, MSc, PGeo, Vice-President Exploration and Director, Qualified Person – Melchett Lake, El Mezquite, Jackie

- ✓ Professional exploration geologist with forty-two years of experience licensed with the Engineers & Geoscientists of British Columbia (EGBC).

Art Brown, Director

- ✓ 25+ years of public company directorship and management.

Kevin Thieneman, Director

- ✓ 25+ years of global company directorship and management, licensed attorney and CPA.

Camilla Cormier, CPA, CFO

- ✓ 30 years experience as CFO and Controller, including 14 years with public companies.

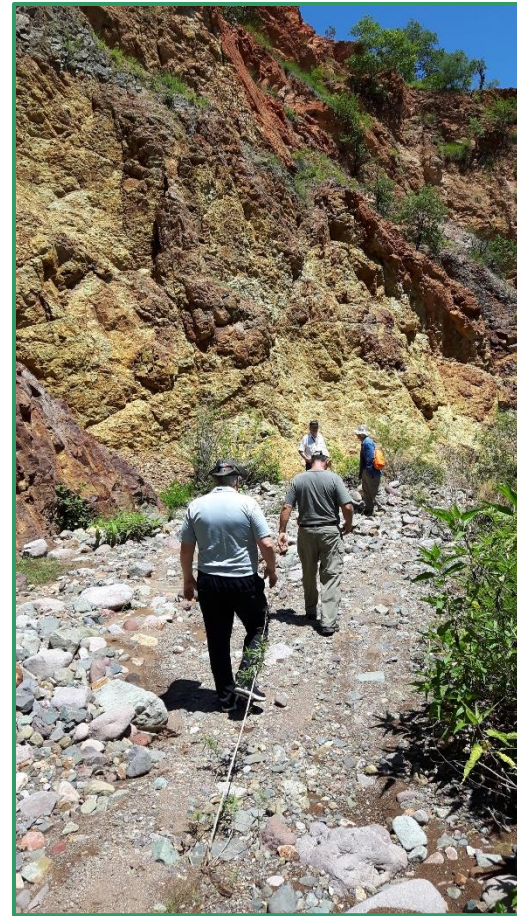
Craig Gibson, PhD, CPG, Qualified Person – Pino de Plata

- ✓ More than 25 years of exploration in Mexico; Certified Professional Geologist (AIPG).



TSX Venture: SSE

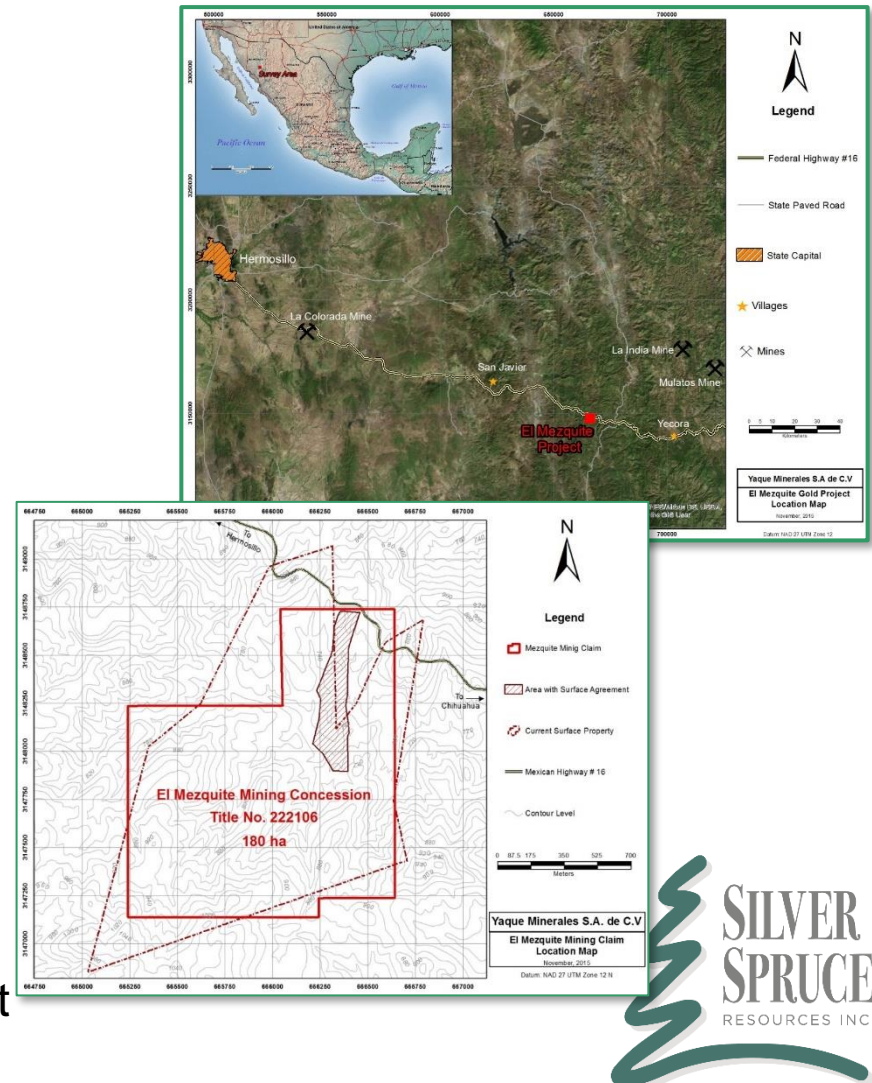
El Mezquite Au-Ag Project, Sonora, Mexico



El Mezquite - The Property

TSX Venture: SSE

- ✓ Located 50km SW of Mulatos and 58km SW of La India Mines in very productive region of the Sierra Madre Occidental gold-silver belt
- ✓ Road-accessible concessions comprising 180 hectares located 170km SE of Hermosillo
- ✓ Exploration Target is low grade, large tonnage, heap leachable deposit
- ✓ October 2019 43-101 report
- ✓ Accessible infrastructure and skilled workforce
- ✓ Option Agreement to earn 50% interest



El Mezquite - Highlights

TSX Venture: SSE

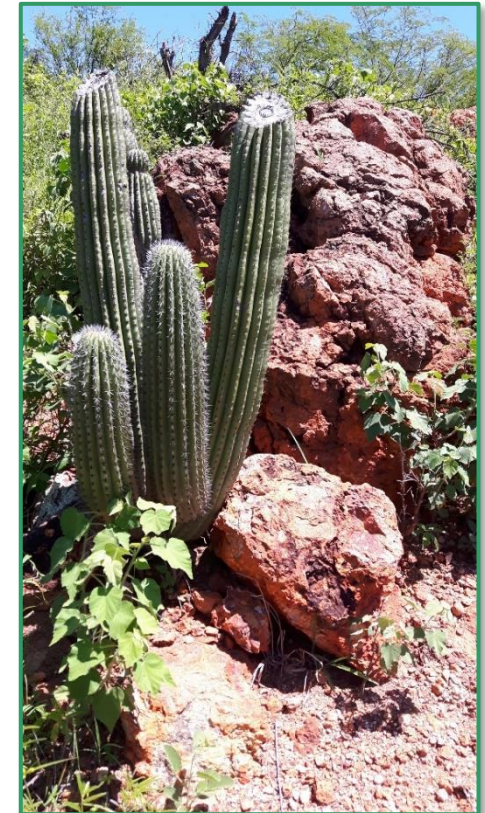
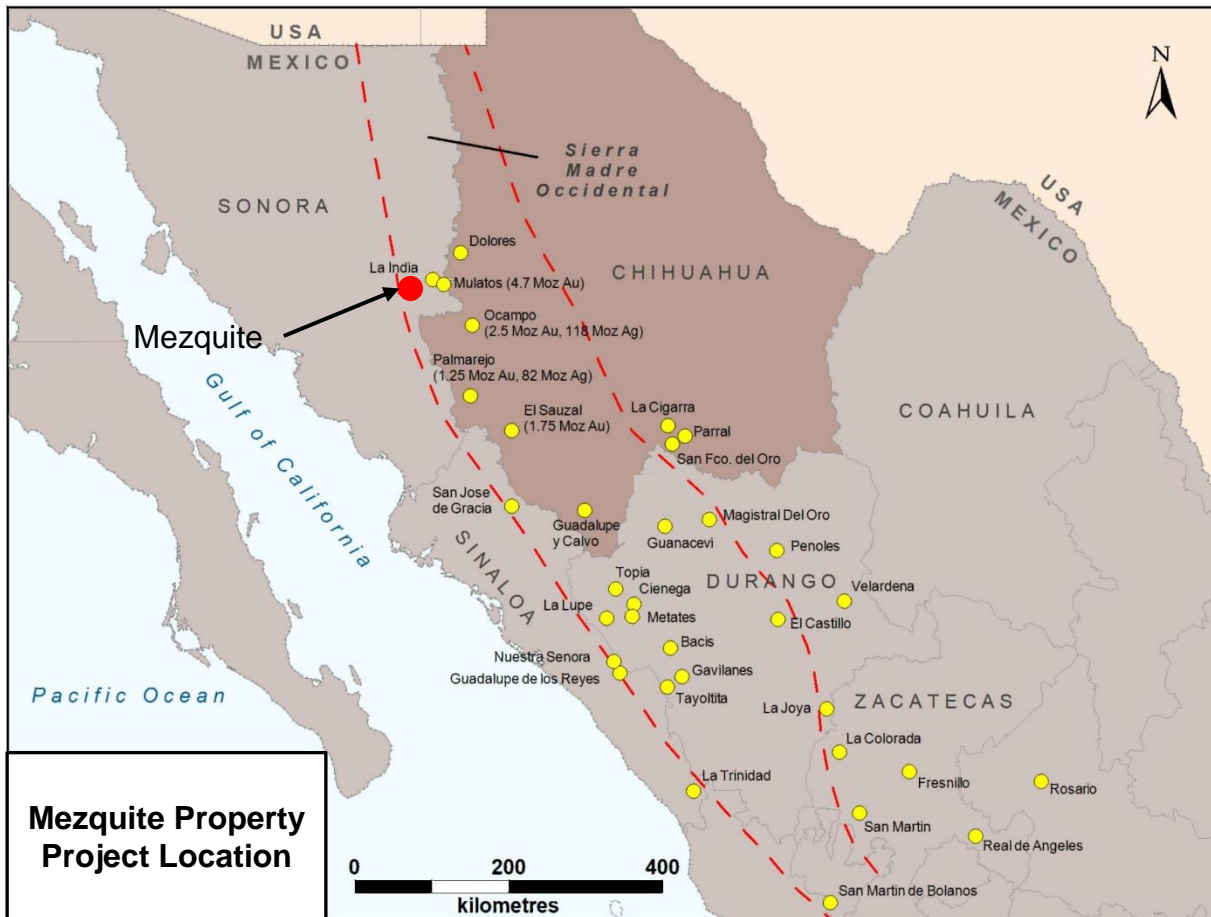
- ✓ 398 Rock Chip Samples
 - 58 showing high values (>0.10 g/t Au)
 - up to 3.41 g/t Au & 198 g/t Ag
- ✓ 3DIP & Mag survey completed over eastern side of property – drill targets identified
- ✓ Historical artisanal mining - 30 m adit into highly altered and oxidized rock
- ✓ Geochemically anomalous 300m x 600m mineralized zone identified
- ✓ Assessment of historic obras (workings) and additional chargeability anomalies warranted on western side of property
- ✓ **No drilling to date on the property**



Project Location

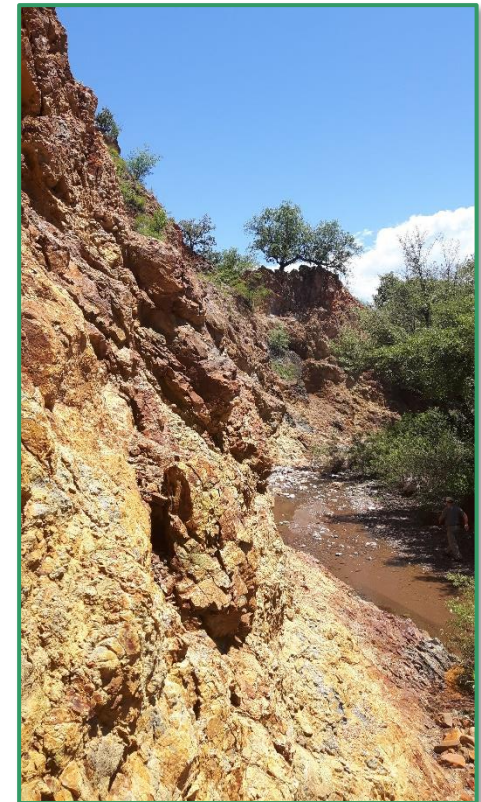
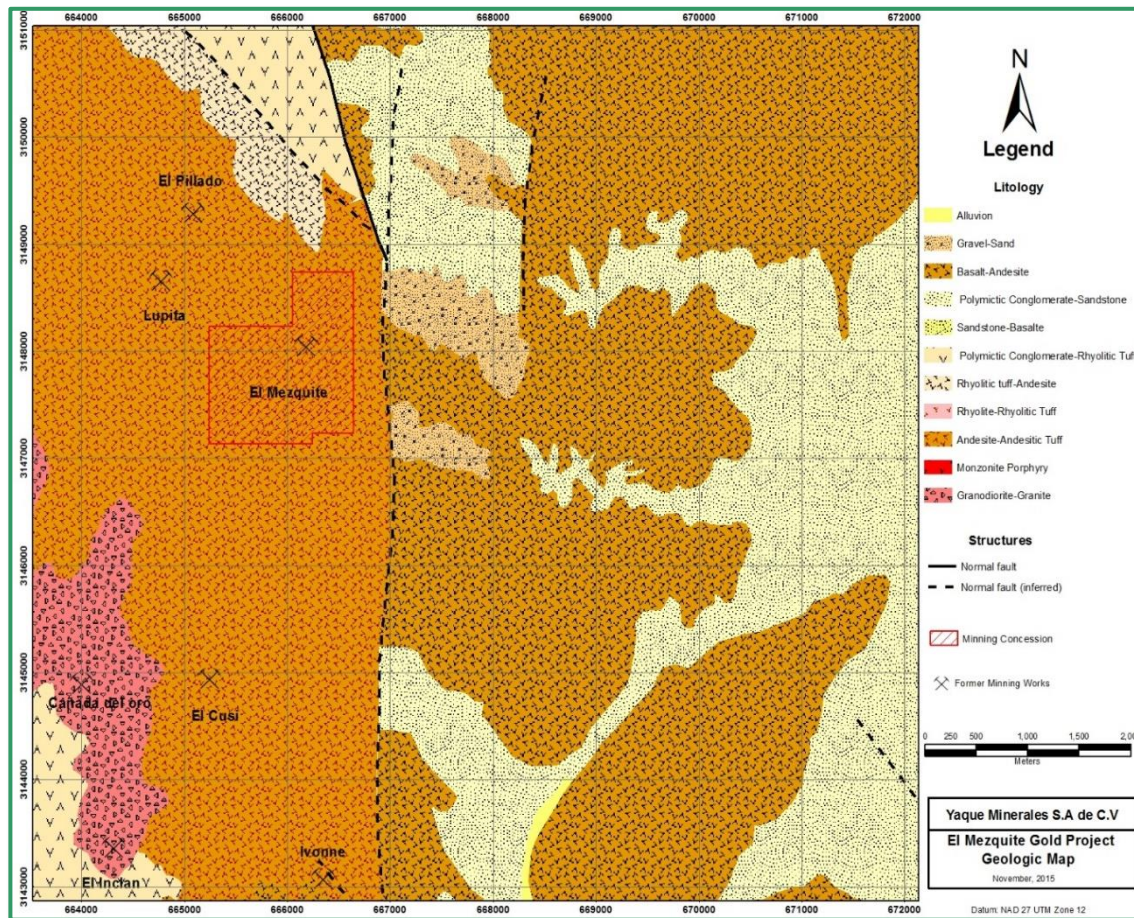
Sierra Madre Occidental - Sonora

TSX Venture: SSE



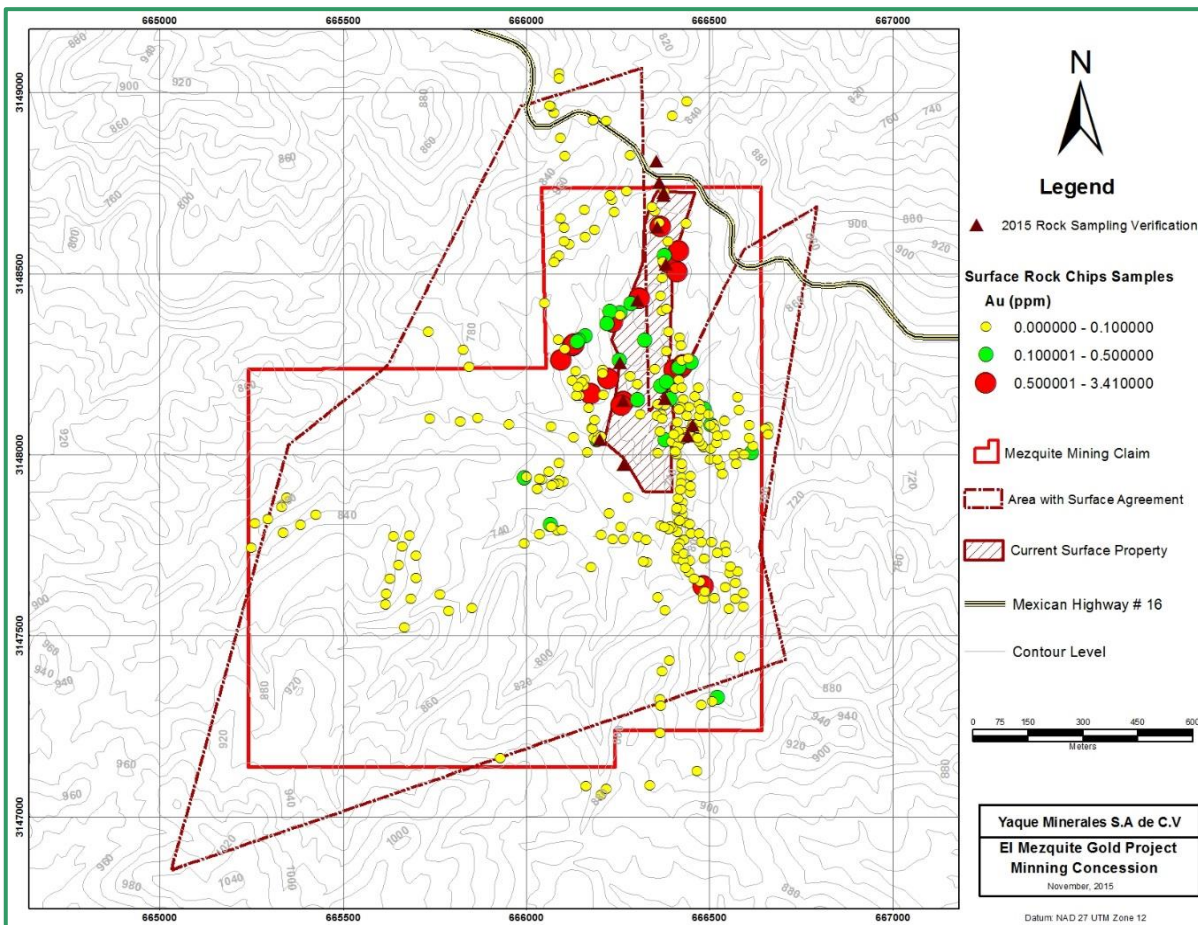
El Mezquite - Regional Geology

TSX Venture: SSE



El Mezquite - Rock Chip Sampling

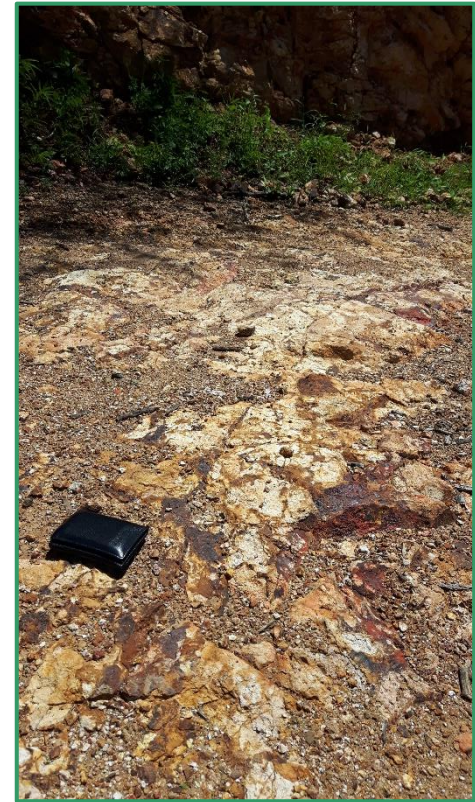
TSX Venture: SSE



Chip samples being taken in rhyolite breccia

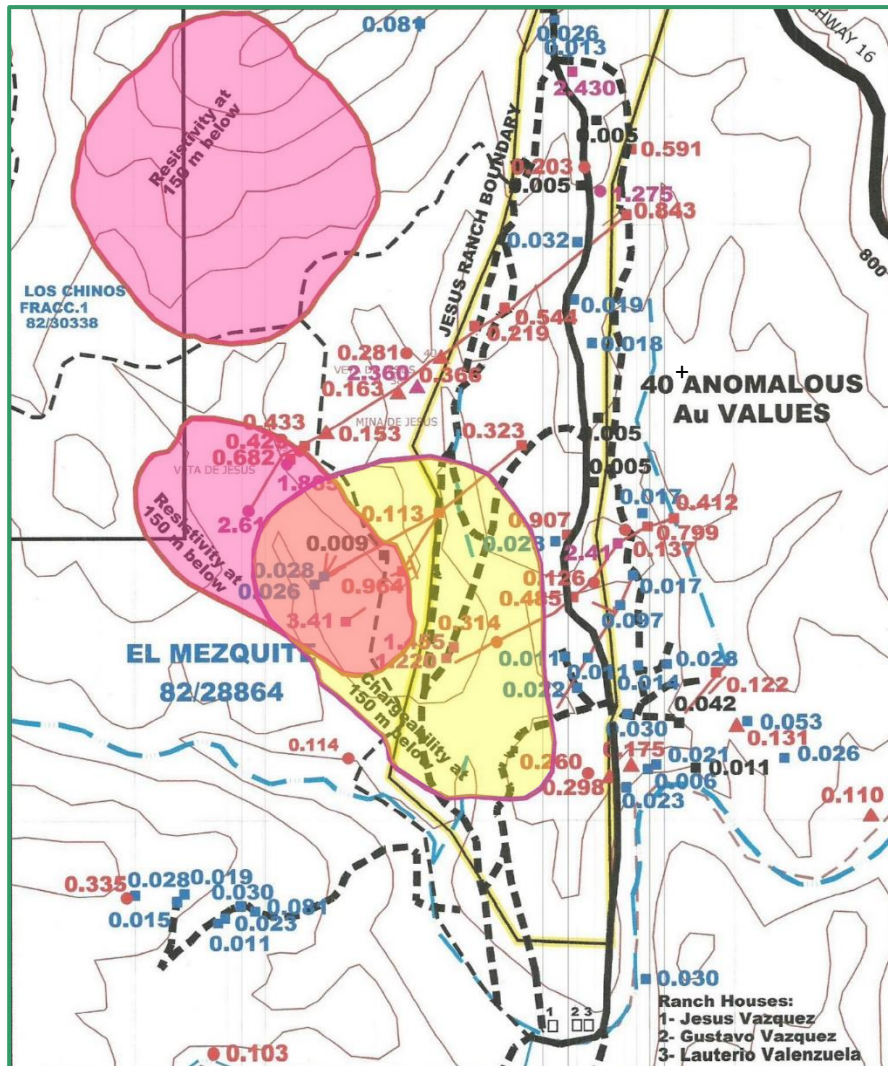
El Mezquite - Surface Alteration

TSX Venture: SSE

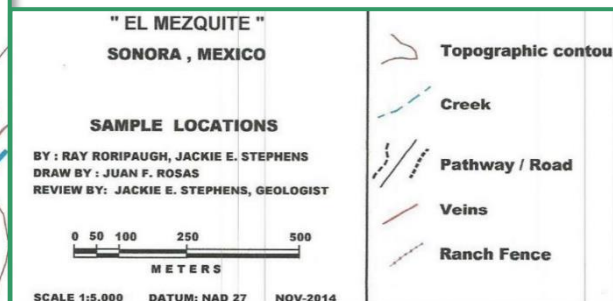


El Mezquite - Exploration Plans

TSX Venture: SSE



- ✓ GIS Compilation
- ✓ Detailed geological mapping
- ✓ Structural and lineament mapping
- ✓ Rock and trench sampling
- ✓ Rock hyperspectral analysis
- ✓ Drilling - Phase 1 1000-1500m



Silver Spruce Resources Inc.

TSX Venture: SSE, USA: SSEBF, Frankfurt: S6Q



Suite 440, 1600 Bedford Highway,
Bedford, Nova Scotia, B4A 1E8 Canada
1-902-430-8270
1-866-641-3397

info@silverspruceresources.com
www.silverspruceresources.com

