

“Seizing Opportunity and Creating Value”



EXPLORING in CANADA and MEXICO - Corporate Presentation

TSX Venture: SSE

US OTC: SSEBF

Frankfurt: S6Q

www.silverspruceresources.com

October 2025

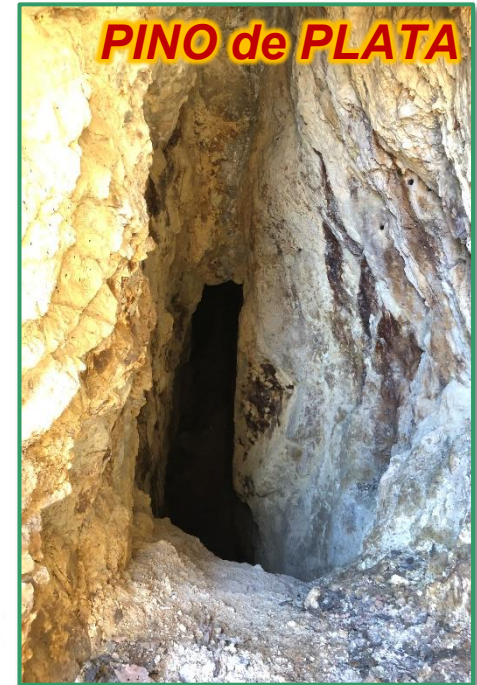
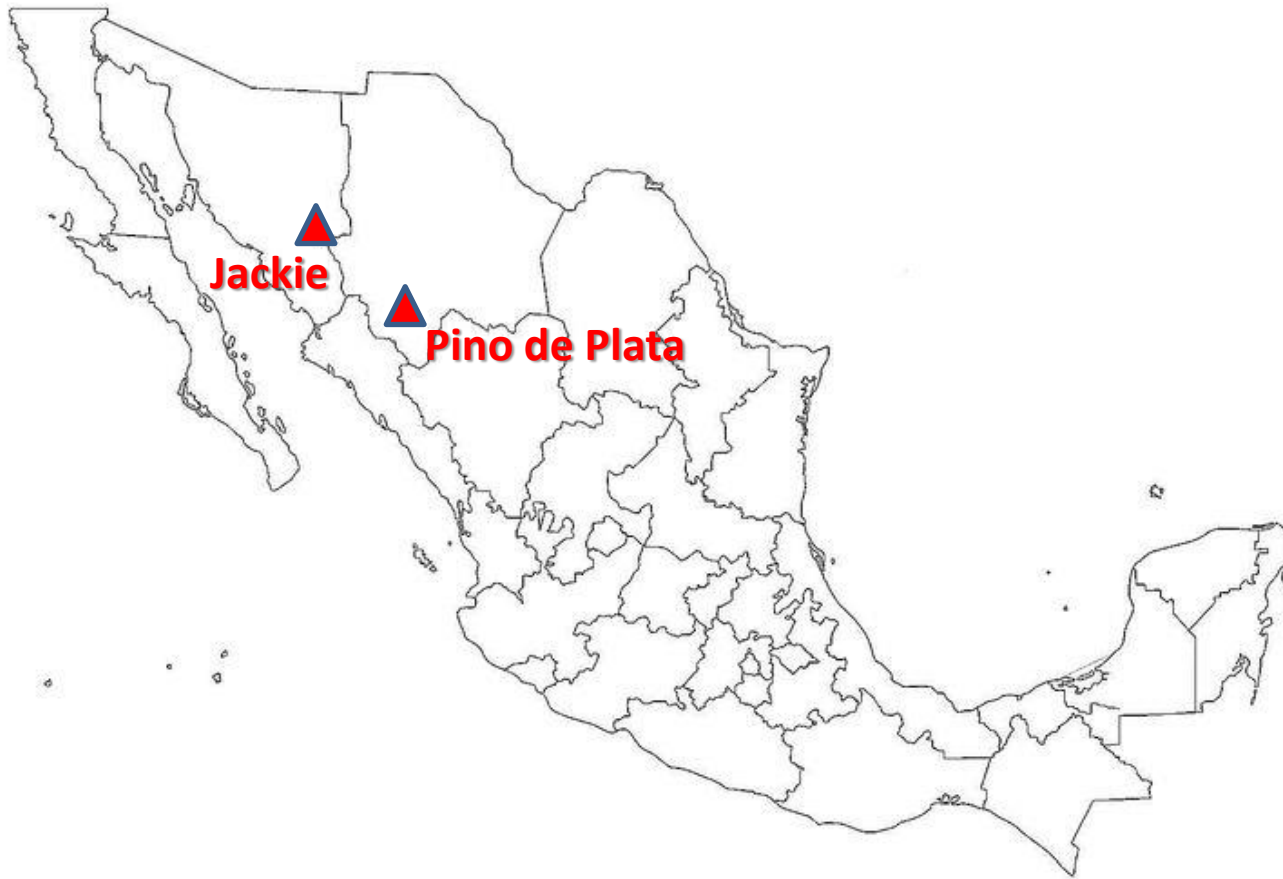


Cautionary Statement

Investors are cautioned that, except for statements of historical fact, certain information contained in this document includes "forward-looking information" with respect to a performance expectation for SSE. Such forward-looking statements are based on current expectations, estimates and projections formulated using assumptions believed to be reasonable and involving a number of risks and uncertainties which could cause actual results to differ materially from those anticipated. Such factors include, without limitation, fluctuations in foreign exchange markets, the price of commodities in both the cash market and futures market, changes in legislation, taxation, controls and regulations of national and local governments and political and economic developments in Canada and other countries where SSE carries-out or may carry-out business in the future, the availability of future business opportunities and the ability to successfully integrate acquisitions or operational difficulties related to technical activities of mining and reclamation, the speculative nature of exploration and development of mineral deposits located, including risks in obtaining necessary licences and permits, reducing the quantity or grade of reserves, adverse changes in credit ratings, and the challenge of title. The Company does not undertake an obligation to update publicly or revise any forward-looking statements or information, whether as a result of new information, future events or otherwise, unless so required by applicable securities laws.



Project Locations - Mexico



Mexico - The Potential

- ✓ Located within northwest-trending “Sonora Gold Belt” in Sierra Madre and parallel to Au-Ag-rich Mojave-Sonora Megashear
- ✓ Properties well located near Coeur’s Palmarejo Au-Ag Mine, Minera Alamos’ Santana/Nicho Au Mine and others
- ✓ **Jackie - Greenfields Au-Ag** discovery over 200m x 400m target in 2021; low to high grade opportunity
- ✓ There is **no prior exploration** reported on the Jackie Property with high Au-Ag assays to **9.65 g/t Au and 515 g/t Ag** in new discovery
- ✓ **Pino de Plata - Twelve Ag-Pb-Zn targets**; located in western Chihuahua, disseminated epithermal, replacement and skarn carbonate, and veins
- ✓ Low to high grade precious metals and base metals provide discrete opportunities for in-house or partnered development



“Seizing Opportunity and Creating Value”



EXPLORING in MEXICO *PINO de PLATA*** Ag-Pb-Zn Project**

TSX Venture: SSE

US OTC: SSEBF

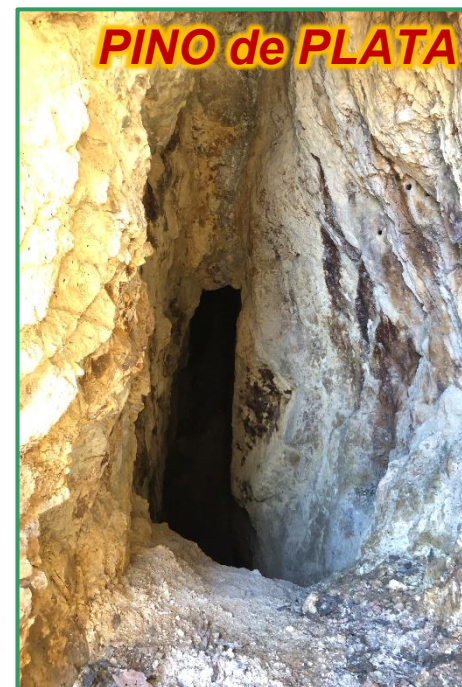
Frankfurt: S6Q

www.silverspruceresources.com

October 2025



Project Locations - Mexico



Mexico - The Potential

- ✓ Located within northwest-trending “Sonora Gold Belt” in Sierra Madre and parallel to Au-Ag-rich Mojave-Sonora Megashear
- ✓ Properties well located near Coeur’s Palmarejo Au-Ag Mine, Minera Alamos’ Santana/Nicho Au Mine and others
- ✓ **Jackie - Greenfields Au-Ag** discovery over 200m x 400m target in 2021; low to high grade opportunity
- ✓ There is **no prior exploration** reported on the Jackie Property with high Au-Ag assays to **9.65 g/t Au and 515 g/t Ag** in new discovery
- ✓ **Pino de Plata - Twelve Ag-Pb-Zn targets**; located in western Chihuahua, disseminated epithermal, replacement and skarn carbonate, and veins
- ✓ Low to high grade precious metals and base metals provide discrete opportunities for in-house or partnered development

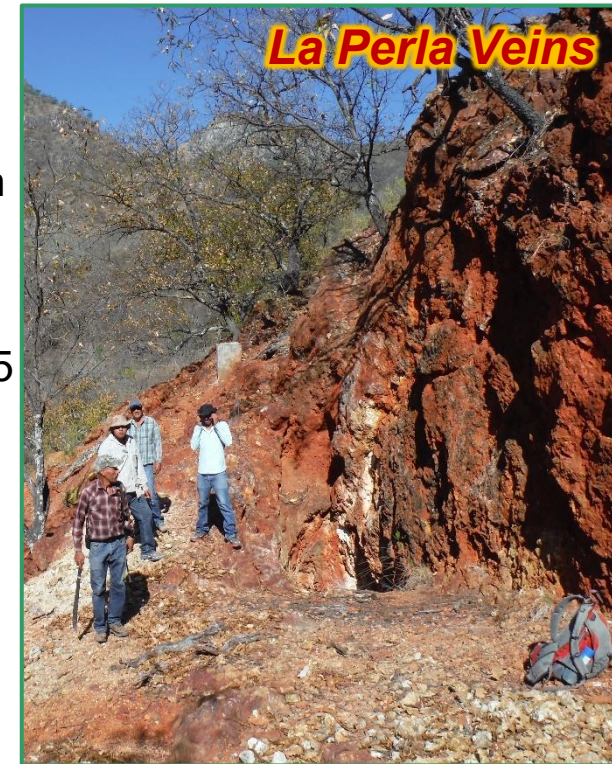


***Pino de Plata
Ag-Au Project,
Chihuahua,
Mexico***



Pino de Plata - The Property

- ✓ Located 15 km away from Coeur Mining's flagship Palmarejo Mine in Chihuahua, Mexico
- ✓ Four road-accessible concessions comprising 397 hectares in the heart of the Sierra Madre Occidental gold-silver belt
- ✓ Definitive Purchase Agreement for 100% interest in 2015
- ✓ Negotiate Favorable Amendments to Option Deal in May 2025
- ✓ Landowner access negotiations then restarted 2025
- ✓ Surface exposures and dumps have yielded high silver and base metal values
- ✓ **Permitting for 30 drill pads was approved in 2018**
- ✓ Twelve targets identified for immediate Phase 1 drilling
- ✓ Disseminated epithermal, replacement and skarn carbonate, and vein targets



Pino de Plata - Epithermal Targets



El Terrero Vein sampled 1130 g/t Ag with 3.72% Pb for 1278 g/t AgEq. Seven out of nine samples **>1 oz/t (31.25 g/t) Ag and up to 17.8 oz/t (557 g/t) Ag.**

Pino de Plata - Vein Targets



The La Perla, Sierpe I & II and Theodora veins are open on strike and have indications of high grade **>8 opt (250 g/t) Ag**

Pino de Plata - Carbonate Replacement Targets



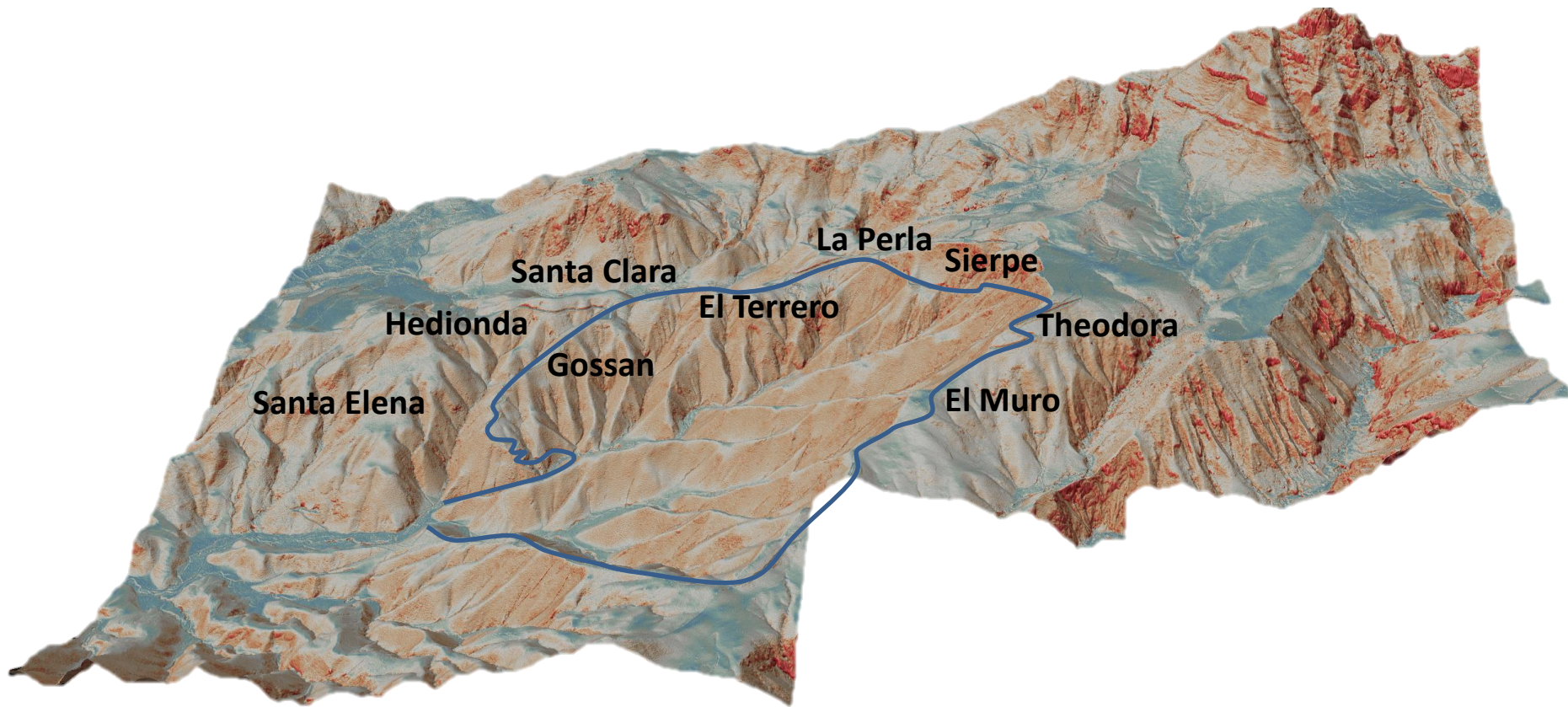
Santa Elena - Gossan Area is a viable target for replacement Ag-Pb-Zn-Cu deposits where extensive gossans are anomalous in Ag and base metals, unoxidized replacement mineralization approaches **200 g/t Ag** with conceptual target for relatively shallow mineralization over an area of >20Ha

Pino de Plata - Exploration and Plans

- ✓ LiDAR survey completed in 2021
- ✓ LiDAR interpretation completed in 2023
- ✓ **Re-negotiation of Option Agreement done**
- ✓ **Signing of Landowner Access Agreement pending**
- ✓ ArcGIS compilation
- ✓ Geological, structural and lineament mapping
- ✓ Rock and trench sampling, hyperspectral analysis
- ✓ **Drilling - Phase 1 20-30 sites 1,500m to 2,000m**

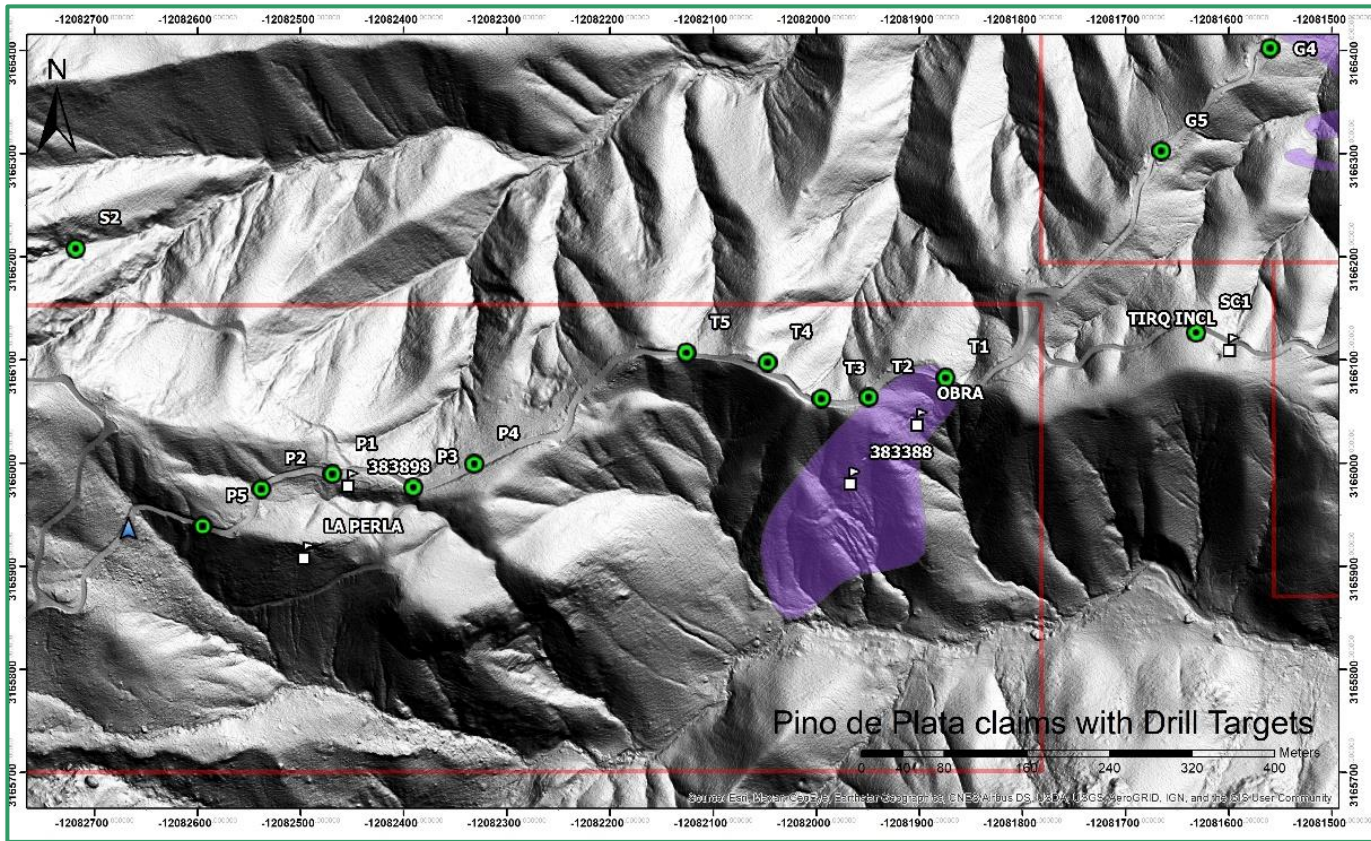


Pino de Plata - LiDAR Mapping



LiDAR enhanced digital elevation map with drill targets
looking south across Pino de Plata property

Pino de Plata - Exploration Quote

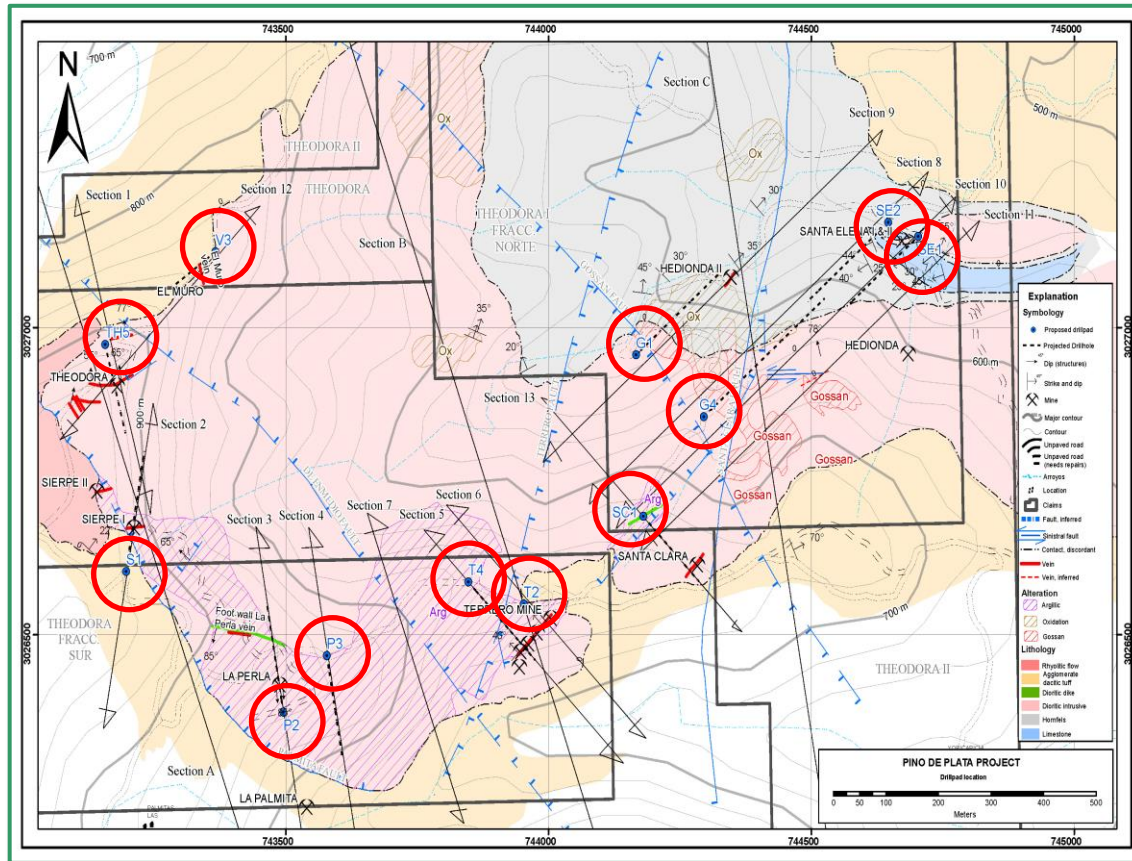


"We have flight data from our LiDAR survey and are updating the Pino de Plata ArcGIS database while negotiations completed for an amended option deal and pending access agreement with the claimholder and landowner, respectively, to permit drilling on several highly promising silver targets. The new LiDAR data provides high resolution topographic control for the proposed Phase 1 drill program. Plans in place for expedited Phase 1 drilling once agreements in place."



Pino de Plata Project

Drilling Plan



Geological map with section lines and twelve (12) proposed drill pads (dark blue symbols circled in red), collar location, azimuth and orientation, and projected depth showing distribution across property.

Silver Spruce Resources Inc.

TSX Venture: SSE, USA OTC: SSEBF, Frankfurt: S6Q



Suite 802, Sun Tower, 1550 Bedford Highway,
Bedford, Nova Scotia, B4A 1E6 Canada

Greg Davison, PGeo, VP Exploration & Director 250-521-0444

greg@silverspruceresources.com

www.silverspruceresources.com

