

EXPLORING THE DRILL-READY **MELCHETT LAKE** VMS-Au, ONTARIO, **PINO de PLATA** Ag-Pb-Zn AND **EL MEZQUITE** Au-Ag PROJECTS, MEXICO

Silver Spruce Resources Inc. is a Canadian publicly traded company that trades on the TSX Venture Exchange under the symbol **SSE** with **144 MM shares outstanding**.

The Company has an experienced management team in the areas of exploration, prospect development, corporate finance, legal and public company management.

Actively exploring in Canada; Sonora and Chihuahua, Mexico

Silver Spruce has signed a definitive option agreement to acquire 100% of the 2,124-hectare **Melchett Lake** project located within an historically active region including the Marshall Lake VMS project. The Company staked an additional 1,872 hectares to complete coverage of **Melchett Lake** mineralization reported over 22 km strike length.

Surface samples at **Melchett Lake** yielded up to **28.8 g/t Gold and 19.1% Zinc**.

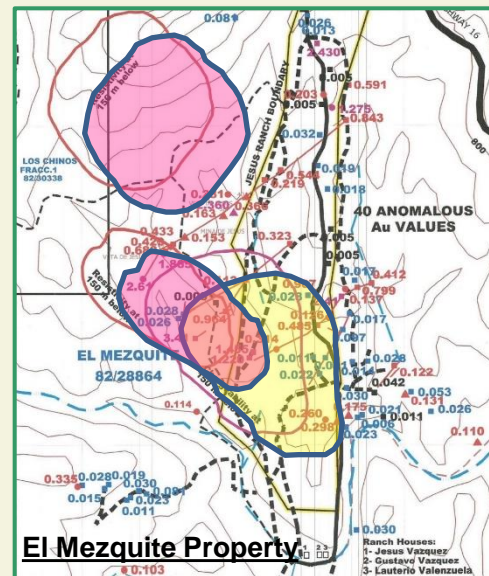
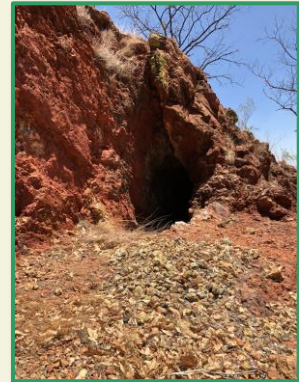
Silver Spruce has signed a definitive option agreement to acquire 100% of the 397-hectare **Pino de Plata** project, 15km west from the Coeur Mining's flagship mine at Palmarejo, Chihuahua, Mexico.

Surface sampling at **Pino de Plata** yielded silver grades **over 1,100 g/t Ag** with highly anomalous grades of lead, zinc and gold.

Twelve Phase 1 targets at **Pino de Plata** include gossans in the Gossan zone, skarn/replacements at Santa Elena, the El Terrero mine target, the La Perla vein and associated alteration zone, the Santa Clara vein, the Theodora vein, the Sierpe veins and associated alteration, and the newly defined Muro vein.

Silver Spruce recently signed an option agreement with Colibri Resource to acquire 50% interest in Yaque Minerales S.A de C.V. ("Yaque") which holds the 180-hectare **El Mezquite** Gold project, 170 km southeast of Hermosillo, Sonora, Mexico and the nearby 1,130-hectare **Jackie** gold property.

Historical artisanal mining at **El Mezquite** in highly altered and oxidized andesites, rhyolitic breccias and veins, coincident chargeability anomalies, and discrete geochemical and structural trends containing broad areas of elevated precious metal values to **3.41 g/t Au and 198 g/t Ag** clearly define anomalies for detailed exploration and drilling.



“Seizing Opportunity and Creating Value”

- *Actively exploring in Canada; Sonora and Chihuahua, Mexico*
- *Gold, silver, zinc and copper; precious metal to polymetallic*
- *Surface mineralization and drill intervals to >500m*
- *Phase 1 hyperspectral, geophysical and drill programs funded*

Board and Management

Dr. Brian Penney, PhD, DIC, P.Eng., CEO, Chairman/Director

- ✓ Ph.D.- High energy nuclear physics-Imperial College of Science & Technology, Univ. of London.

Kevin O'Connor, Director

- ✓ Corporate attorney based in Chicago, IL, focused on M&A, Joint Ventures and divestitures.

Greg Davison, MSc, PGeo, Vice-President Exploration and Director, Qualified Person – Melchett Lake, Mezquite, Jackie

- ✓ Professional exploration geologist with forty-two years of experience licensed with the Engineers & Geoscientists of British Columbia (EGBC).

Art Brown, Director

- ✓ 25+ years of public company directorship and management.

Kevin Thieneman, Director

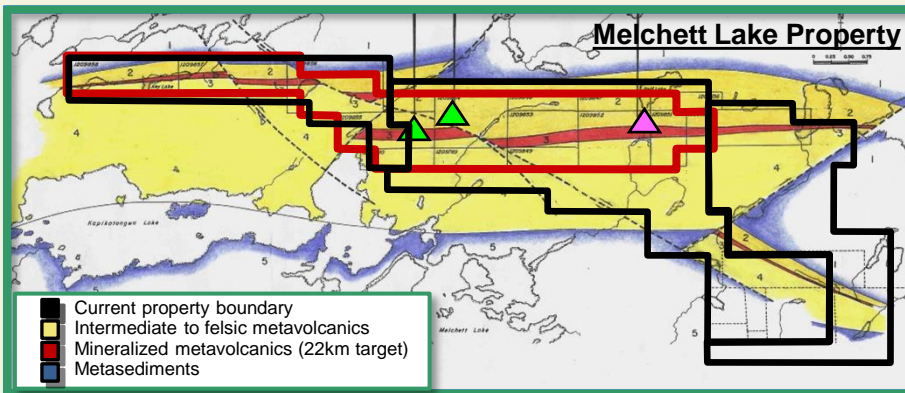
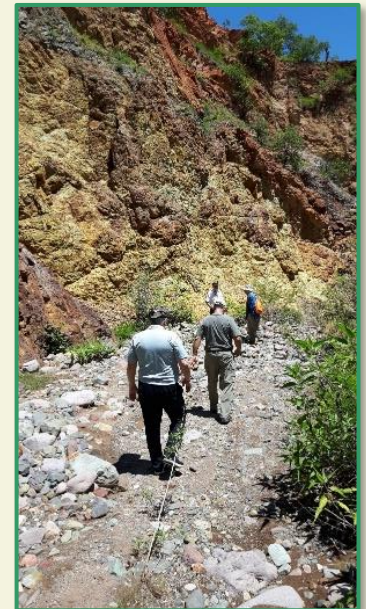
- ✓ 25+ years of global company directorship and management, licensed attorney and CPA.

Camilla Cormier, CPA, CFO

- ✓ 30 years experience as CFO and Controller, including 14 years with public companies.

Craig Gibson, PhD, CPG, Qualified Person – Pino de Plata

- ✓ More than 25 years of exploration in Mexico; Certified Professional Geologist (AIPG).



Sep 24, 2020

Exchange Listings	TSX Venture: SSE FSE: S6Q1 USA: SSEBF
Head office	Bedford, Nova Scotia
Shares Outstanding	144,335,833
Warrants	67,827,841
Options	7,050,000
Fully diluted	219,213,674
Share Price Range	\$.015 - \$0.12
Debt	Nil
Tax Loss Carry Forward	> \$10 M
Bank	Canadian Imperial Bank of Commerce
Auditors	Grant Thornton LLP

Suite 440, 1600 Bedford Highway, Bedford, Nova Scotia, B4A 1E8 Canada

1-902-430-8270 info@silverspruceresources.com www.silverspruceresources.com

