

“Seizing Opportunity and Creating Value”



EXPLORING in CANADA **MYSTERY** Au Project

TSX Venture: SSE
US OTCQB: SSEBF
Frankfurt: S6Q

www.silverspruceresources.com

November 2021



Cautionary Statement

TSX Venture: SSE

Investors are cautioned that, except for statements of historical fact, certain information contained in this document includes "forward-looking information" with respect to a performance expectation for SSE. Such forward-looking statements are based on current expectations, estimates and projections formulated using assumptions believed to be reasonable and involving a number of risks and uncertainties which could cause actual results to differ materially from those anticipated. Such factors include, without limitation, fluctuations in foreign exchange markets, the price of commodities in both the cash market and futures market, changes in legislation, taxation, controls and regulations of national and local governments and political and economic developments in Canada and other countries where SSE carries-out or may carry-out business in the future, the availability of future business opportunities and the ability to successfully integrate acquisitions or operational difficulties related to technical activities of mining and reclamation, the speculative nature of exploration and development of mineral deposits located, including risks in obtaining necessary licences and permits, reducing the quantity or grade of reserves, adverse changes in credit ratings, and the challenge of title. The Company does not undertake an obligation to update publicly or revise any forward-looking statements or information, whether as a result of new information, future events or otherwise, unless so required by applicable securities laws.



Exploration Project Highlights

TSX Venture: SSE

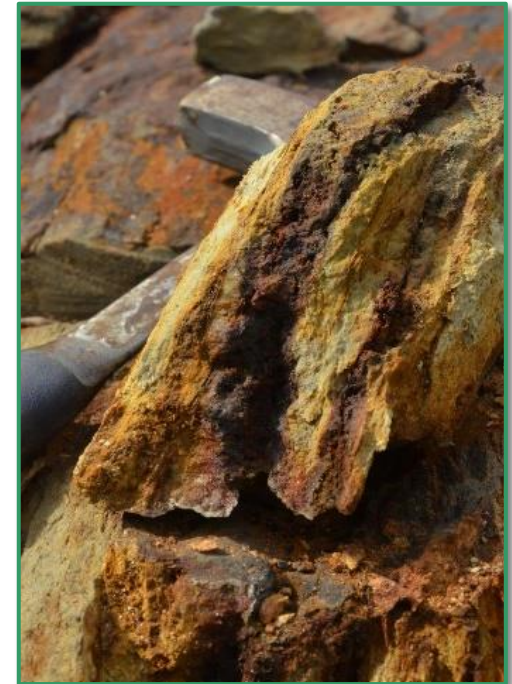
- ✓ AIRBORNE MAG/VLF/GAMMA DONE ON **MELCHETT LAKE** VMS-Au PROJECT, ON
- ✓ AIRBORNE MAG/VLF/GAMMA AND TILL SAMPLING ON **MYSTERY** Au PROJECT, NL
- ✓ PHASE 1 DRILLING COMPLETED ON THE **EL MEZQUITE** Au-Ag PROJECT, MX
- ✓ NEW DISCOVERY READY FOR PHASE 1 DRILLING AT **JACKIE** Au-Ag PROJECT, MX
- ✓ TARGET MAPPING TO START ON HIGH GRADE **DIAMANTE** Au-Ag PROJECT, MX
- ✓ NEGOTIATING LAND ACCESS DEAL TO DRILL **PINO DE PLATA** Ag PROJECT, MX



Project Overview - Canada

TSX Venture: SSE

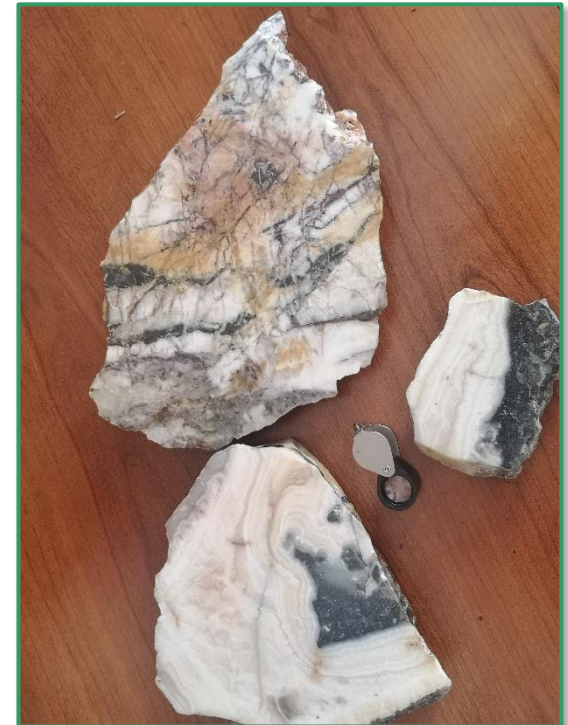
- ✓ Silver Spruce recently signed an agreement to acquire 100% of the 8,750-hectare **Mystery, Till and Marilyn** properties in the Exploits Subzone Gold Belt in central Newfoundland near Sokoman Minerals and New Found Gold discoveries. Grassroots stage property.
- ✓ Vendor samples mainly 1-2 g/t Au, up to 12.5 g/t Au, with strong As and Sb association in laminated to brecciated quartz-carbonate veins typical to local and international analogues of epithermal to mesothermal deposits.
- ✓ Silver Spruce signed an agreement to acquire 100% of the 2,124-hectare **Melchett Lake** project located within an historically active region including Copper Lake's Marshall Lake VMS project.
- ✓ Map staking has increased the Property to 4,716 hectares to complete coverage of the known mineralization reported over 22 km strike length.
- ✓ High grade surface samples have yielded up to 28.8 g/t Gold and 19% Zinc.



Mystery - The Property

TSX Venture: SSE

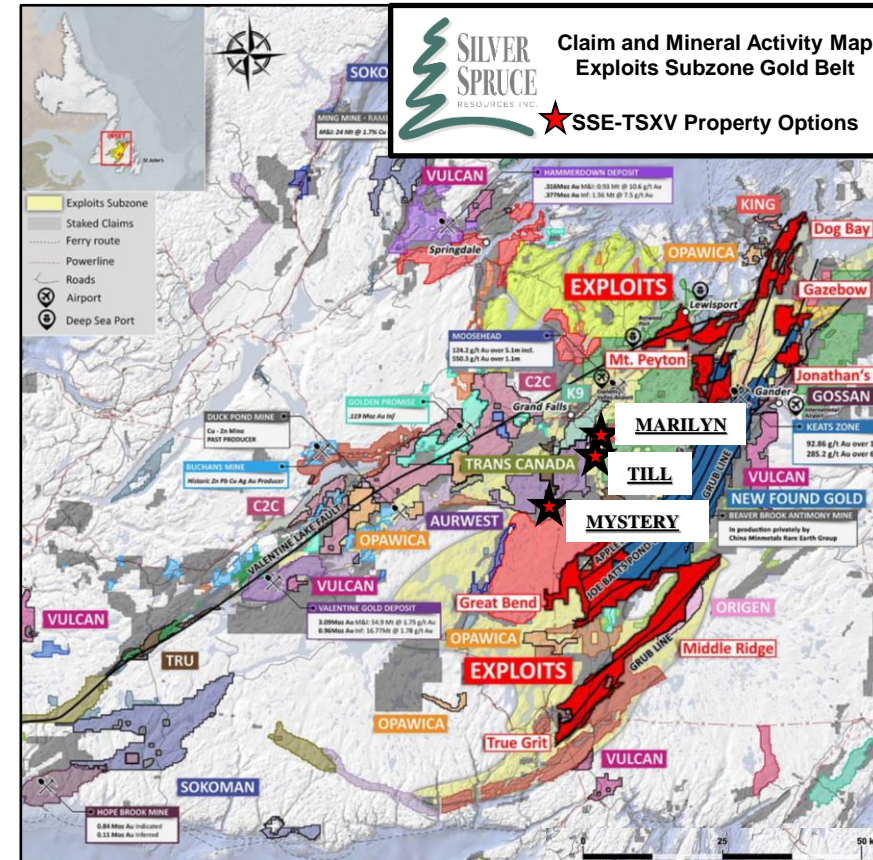
- ✓ Located 20-25 km west of New Found Gold Corp.'s Queensway project and 15-35 km south of Sokoman Minerals' Moosehead gold project, central Newfoundland
- ✓ Strategic location in a very active exploration camp, and proximal to major and secondary structural features defined by the regional and local geophysical and geological coverage
- ✓ Three road and trail-accessible claim blocks comprising 8,750 hectares in the heart of the Exploits Subzone gold belt, 10-30km from Grand Falls, NL
- ✓ Definitive Purchase Agreement for 100% interest signed after due diligence site visit; verification assay results pending
- ✓ **Historical rock sampling to 12.5 g/t Au**
- ✓ Multiple occurrences are reported of agate chalcedony to colloform and crystalline silica veining, carbonate replacement by quartz, and open-space filling quartz and calcite, all textures indicative of epithermal systems and/or structurally controlled mesothermal vein development analogous to Queensway and similar international deposits



Mystery - Exploration and Plans

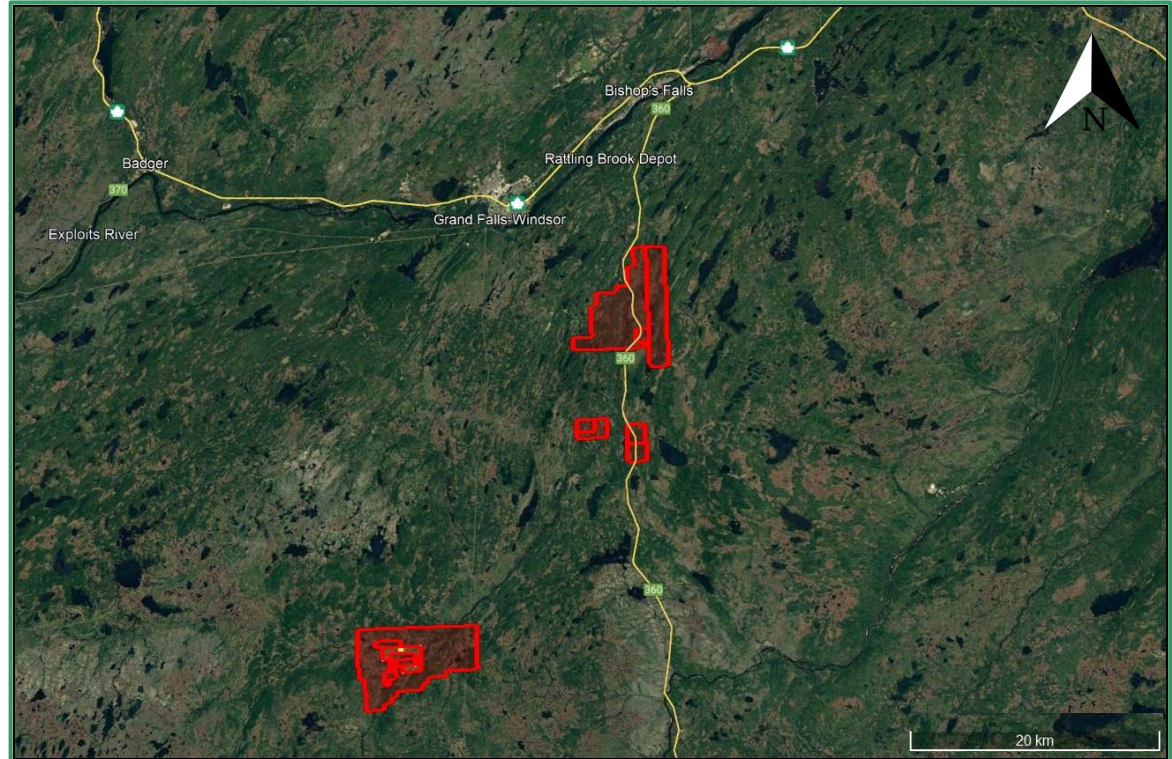
TSX Venture: SSE

- ✓ GIS Compilation Q4 2021 – Q1 2022
- ✓ Acquisition, Review and Interpretation of Regional Geophysical Surveys Q4 2021
- ✓ Permitting Q4 2021
- ✓ **New airborne geophysical survey Q4 2021**
- ✓ **Gold Grain Till Sampling Q4 2021/Q1 2022**
- ✓ Structural and lineament mapping Q2 2022
- ✓ Prospecting, Soil and Rock Geochemistry, Alteration, Targeted geological mapping Q2 2022
- ✓ Permit preparation for drilling Q1 2022
- ✓ Drilling Q2/3 2022
- ✓ Newfoundland offers a favorable regulatory environment, supportive communities, outstanding provincial geological survey, near year-round operating conditions, excellent property access and significant potential for new deposits



Mystery - Exploration Quote

TSX Venture: SSE



“Our initial site exploration reported mineral and rock textures common to shallow epithermal and/or orogenic ‘mesothermal or lode’ vein-style mineralization with Au-As±Sb geochemical association. These points are consistent with the regional discoveries and significant global analogues. We are targeting major and minor structural sets, zones showing strike shift, potential dilation, zones of high resistivity associated with silicification, among other indicators. Fortunately, we have prospective geology with only limited exploration and no history of drilling. Airborne geophysics and till sampling planned in Q4.”



Exploration Projects - Looking Ahead

TSX Venture: SSE

- ✓ SPARTAN MT TO FOLLOW AIRBORNE ON MELCHETT LAKE VMS-Au PROJECT, ON
- ✓ AIRBORNE MAG/VLF/GAMMA AND TILL SAMPLING ON MYSTERY Au PROJECT, NL
- ✓ PHASE 2 DRILLING PLANNED ON THE EL MEZQUITE Au-Ag PROJECT, MX
- ✓ NEW DISCOVERY READY FOR PHASE 1 DRILLING AT JACKIE Au-Ag PROJECT, MX
- ✓ TARGET MAPPING TO START ON HIGH GRADE DIAMANTE Au-Ag PROJECT, MX
- ✓ And NEGOTIATING LAND ACCESS DEAL TO DRILL PINO DE PLATA Ag PROJECT, MX



Silver Spruce Resources Inc.

TSX Venture: SSE, USA OTCQB: SSEBF, Frankfurt: S6Q



Suite 440, 1600 Bedford Highway,
Bedford, Nova Scotia, B4A 1E8 Canada

Michael Kinley CEO Director 902-402-0388
Greg Davison PGeo VPX Director 250-521-0444

info@silverspruceresources.com
www.silverspruceresources.com

