

# ***“Seizing Opportunity and Creating Value”***



## **EXPLORING in CANADA ***MYSTERY*** Au Project**

TSX Venture: SSE  
US OTCQB: SSEBF  
Frankfurt: S6Q

[www.silverspruceresources.com](http://www.silverspruceresources.com)

March 2022



# Cautionary Statement

TSX Venture: SSE

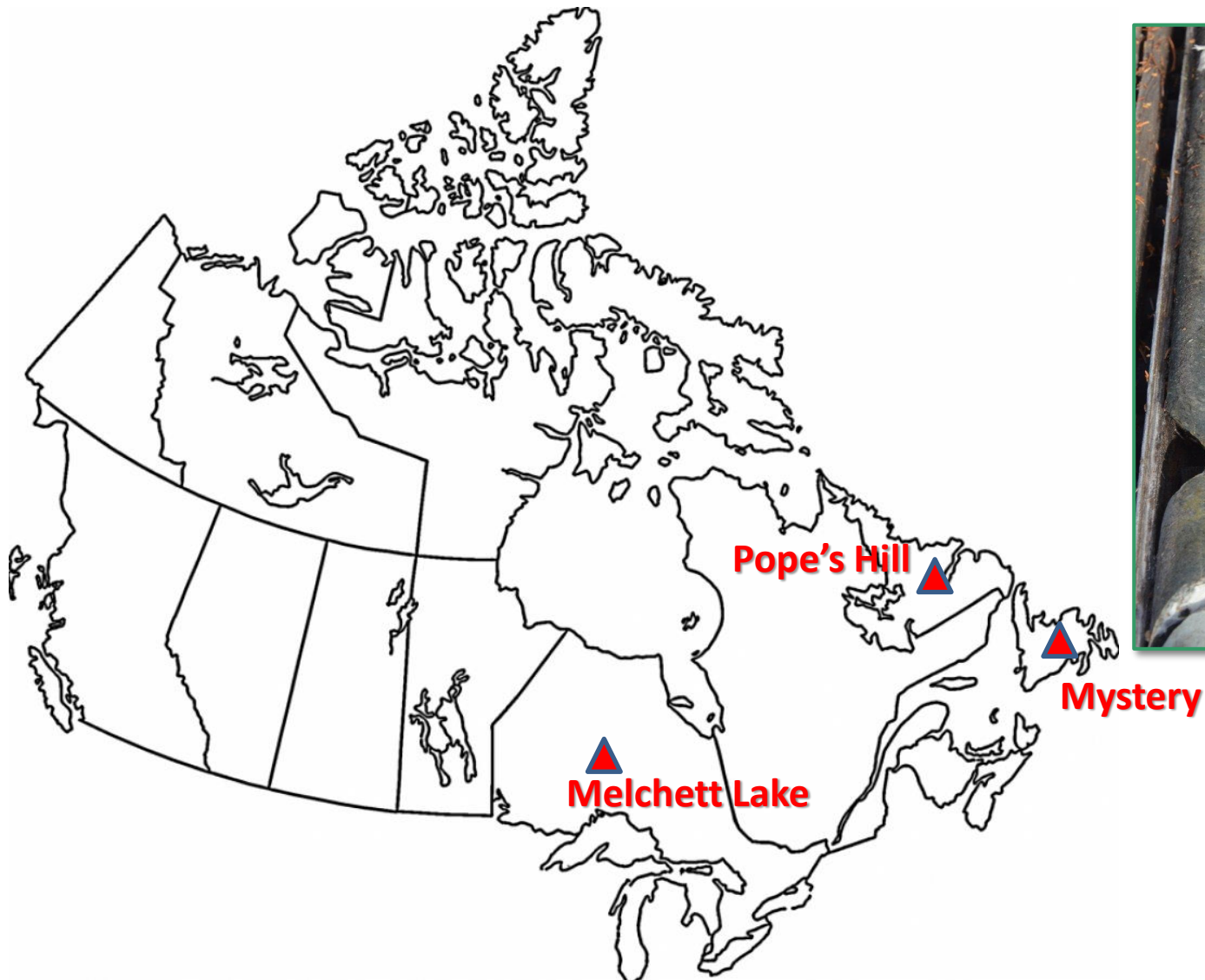
Investors are cautioned that, except for statements of historical fact, certain information contained in this document includes "forward-looking information" with respect to a performance expectation for SSE. Such forward-looking statements are based on current expectations, estimates and projections formulated using assumptions believed to be reasonable and involving a number of risks and uncertainties which could cause actual results to differ materially from those anticipated. Such factors include, without limitation, fluctuations in foreign exchange markets, the price of commodities in both the cash market and futures market, changes in legislation, taxation, controls and regulations of national and local governments and political and economic developments in Canada and other countries where SSE carries-out or may carry-out business in the future, the availability of future business opportunities and the ability to successfully integrate acquisitions or operational difficulties related to technical activities of mining and reclamation, the speculative nature of exploration and development of mineral deposits located, including risks in obtaining necessary licences and permits, reducing the quantity or grade of reserves, adverse changes in credit ratings, and the challenge of title. The Company does not undertake an obligation to update publicly or revise any forward-looking statements or information, whether as a result of new information, future events or otherwise, unless so required by applicable securities laws.





# Project Locations - Canada

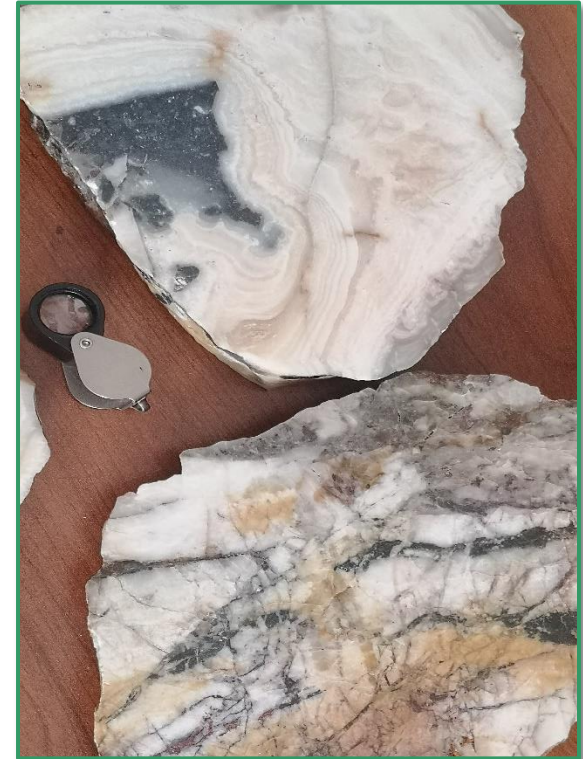
TSX Venture: SSE



# Project Overview - Canada

TSX Venture: SSE

- ✓ Silver Spruce is acquiring 100% of the **8,750-hectare Mystery, Till and Marilyn** properties. Exploits Subzone Gold Belt in central Newfoundland near Sokoman Minerals and New Found Gold discoveries. Grassroots stage property.
- ✓ Vendor and due diligence samples mainly 1-3 g/t Au, up to **12.5 g/t Au, with strong As and Sb association**. Structural controls. Laminated to brecciated quartz-carbonate veins. Local and international analogues of epithermal to mesothermal deposits.
- ✓ Silver Spruce is acquiring 100% of the 2,124-hectare **Melchett Lake** project located within an historically active region including Copper Lake's Marshall Lake VMS project.
- ✓ Map staking to **5,022 hectares** to complete coverage of the known mineralization reported over **22 km strike** length.
- ✓ High grade surface samples have yielded up to **28.8 g/t Gold and 19% Zinc**.
- ✓ **Pope's Hill** REE project was acquired by staking and work completed in 2010 and 2011. Available for option or sale.



TSX Venture: SSE

***Mystery  
Au Project,  
Newfoundland  
and Labrador,  
Canada***





# Mystery - The Potential

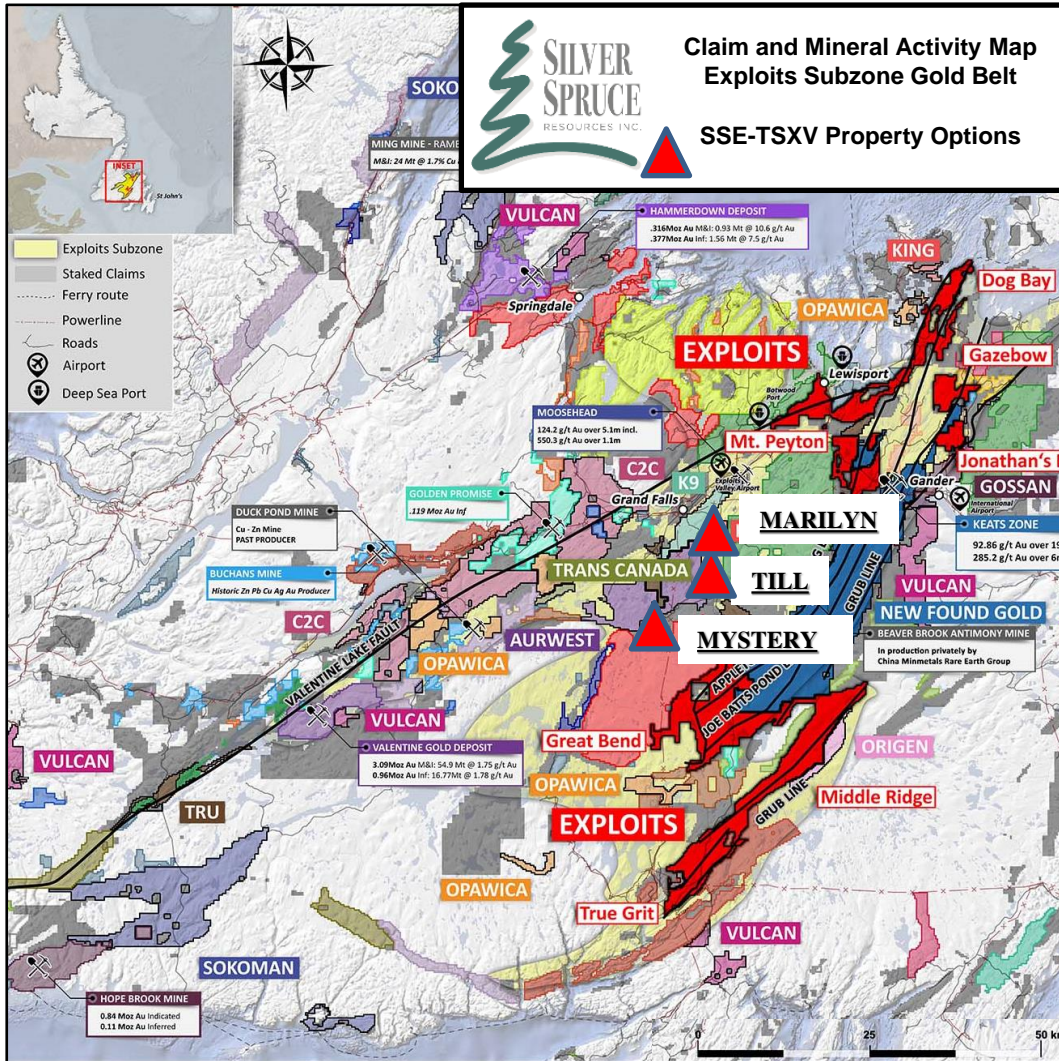
TSX Venture: SSE

- ✓ *Our initial site exploration verified mineral and rock textures common to shallow epithermal and/or orogenic 'mesothermal or lode' vein-style mineralization with Au-As±Sb geochemical association*
- ✓ *Highly anomalous As compared even to known high profile projects*
- ✓ *These key points are consistent with the regional Exploits Gold Belt, Newfoundland discoveries, such as Queensway, and significant global analogues such as Fosterville, Australia*
- ✓ *Multi-million ounce gold resources identified along major structures (e.g., Valentine)*
- ✓ *Beaverbrook Sb Mine west of Queensway*
- ✓ *Newfoundland offers a favorable regulatory environment, supportive communities, outstanding provincial geological survey, near year-round operating conditions, excellent property access and significant potential for new deposits*



# Mystery - Regional Gold Play

## TSX Venture: SSE



- ✓ Located 20-25 km west of New Found Gold Corp.'s Queensway project and 15-35 km south of Sokoman Minerals' Moosehead gold project, central Newfoundland
- ✓ Strategic location in active exploration camp
- ✓ Proximal to major and secondary structural features defined by regional and local geophysical and geological coverage
- ✓ Three road and trail-accessible claim blocks comprising 8,750 hectares in the heart of the Exploits Subzone gold belt



# Mystery - The Property

TSX Venture: SSE

- ✓ **Historical rock sampling to 12.5 g/t Au**
- ✓ **Definitive Purchase Agreement for 100% interest signed; due diligence verification assays to 8.0 g/t Au**
- ✓ Multiple occurrences are reported of agate chalcedony to colloform and crystalline silica veining, carbonate replacement by quartz, and open-space filling quartz and calcite.
- ✓ Textures indicative of epithermal systems and/or structurally controlled mesothermal vein development analogous to Queensway and similar international deposits





# Mystery - Proximity to Regional Structures

TSX Venture: SSE



We are targeting major and minor structural sets, zones showing strike shift, potential dilation, zones of high resistivity associated with silicification, among other indicators.

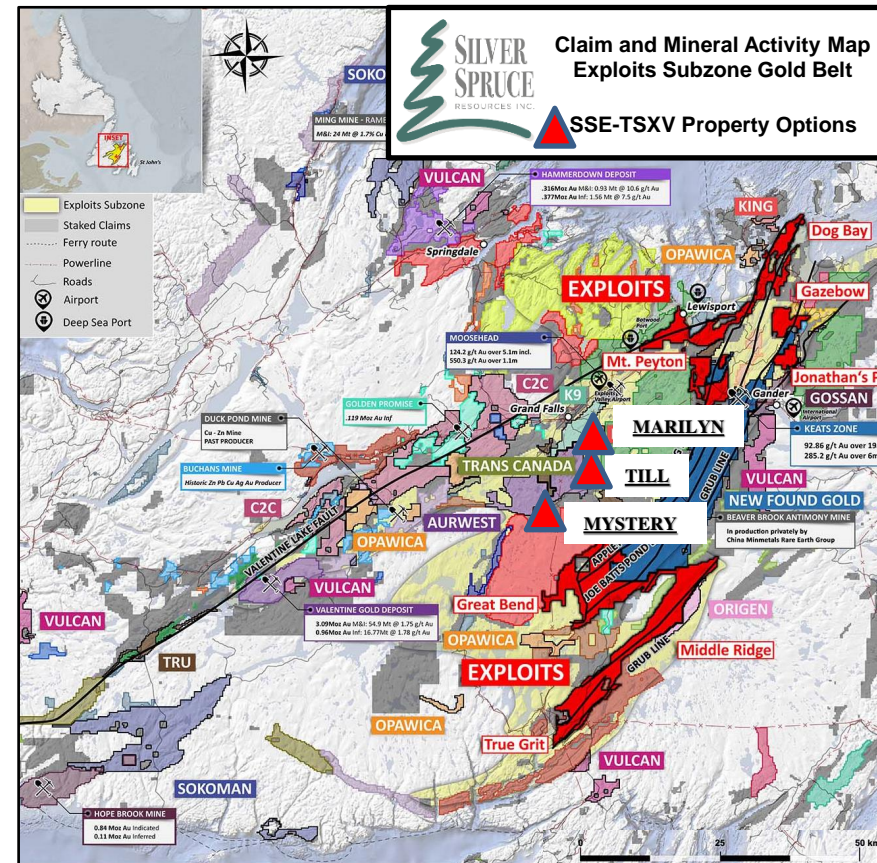




# Mystery - Exploration and Plans

TSX Venture: SSE

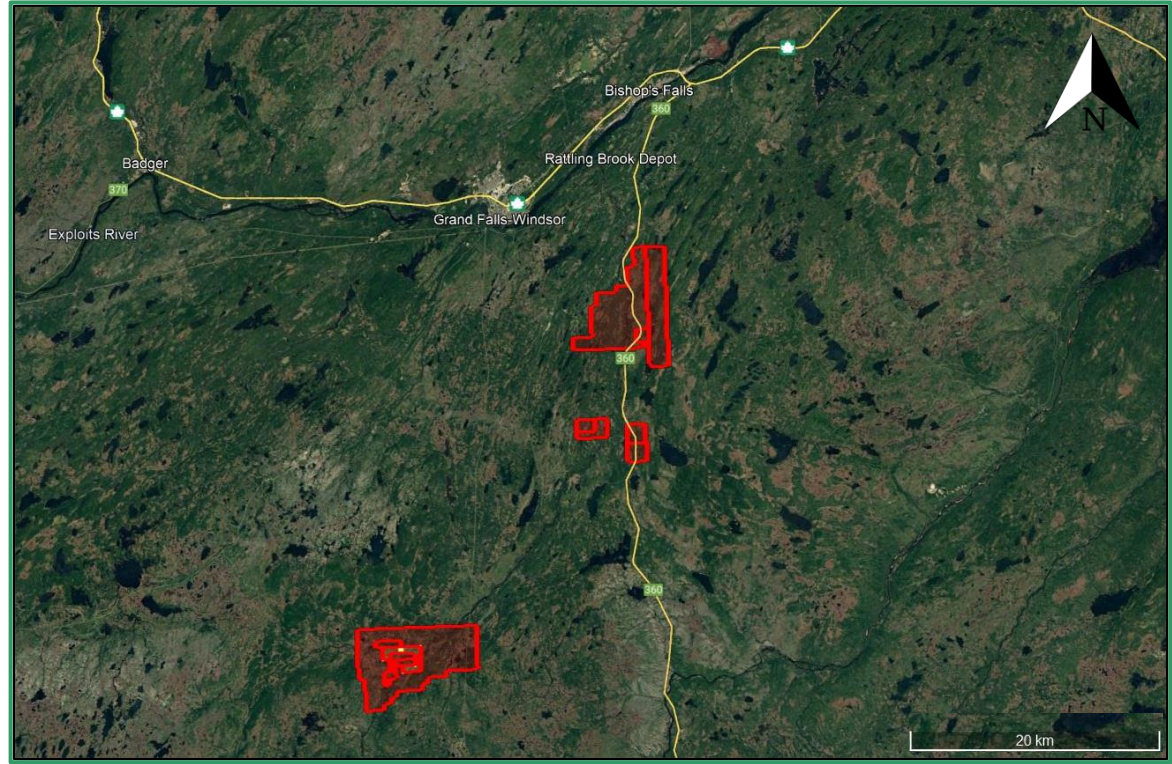
- ✓ GIS Compilation Q4 2021 to Q1 2022
- ✓ Acquisition, Review and Interpretation of Regional Geophysical Surveys Q1 2022
- ✓ **Permitting Q4 2021 completed**
- ✓ **New airborne geophysics Q4 2021/Q1 2022**
- ✓ **Gold Grain Till Sampling Q4 2021/Q1 2022**
- ✓ **Till Processing and Assays Q1 2022**
- ✓ Structural and lineament mapping Q2 2022
- ✓ Prospecting, Soil and Rock Geochemistry, Alteration, Targeted mapping Q2/3 2022
- ✓ Permit preparation for drilling Q3 2022
- ✓ Drilling Planned Q3/4 2022





# Mystery - Exploration Quote

TSX Venture: SSE



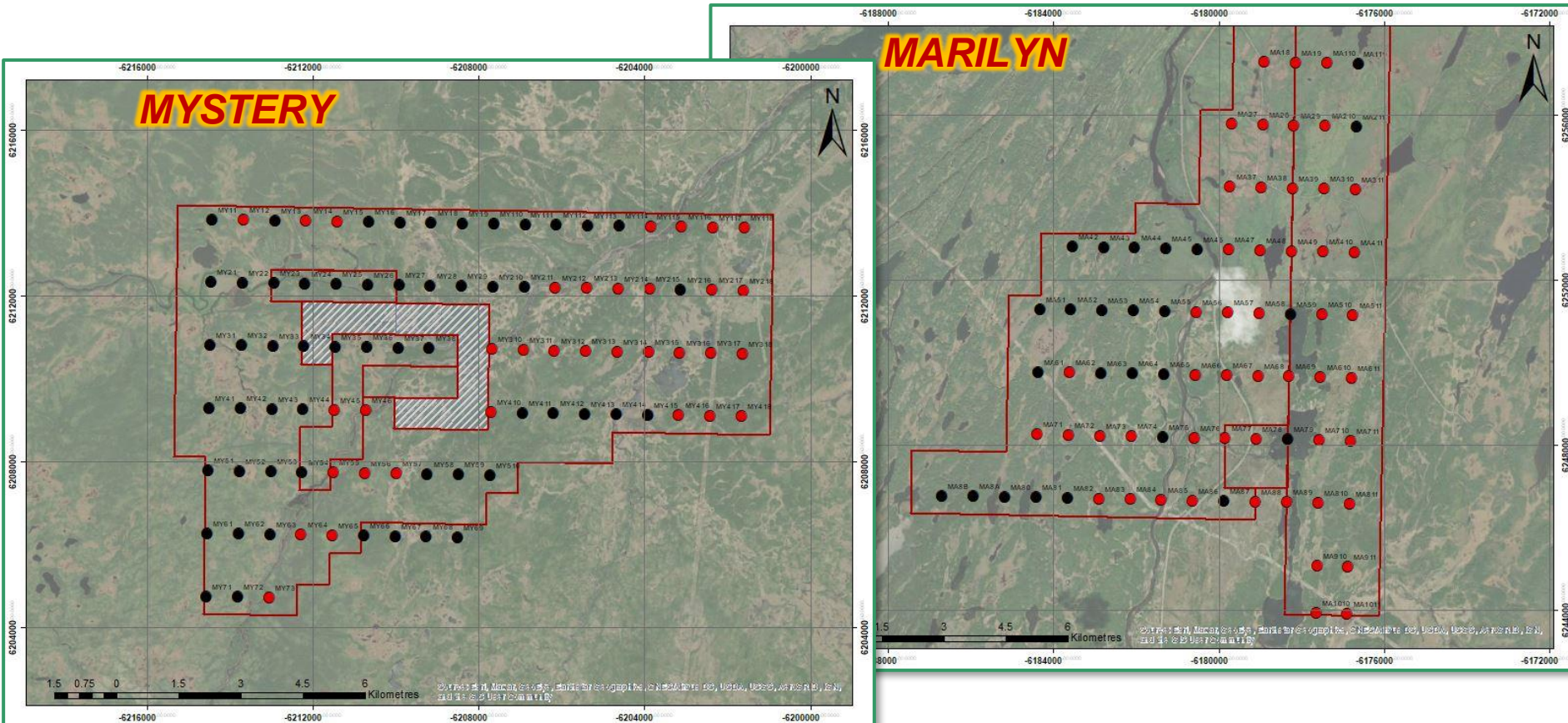
“We have great access, prospective geology with only limited exploration and no history of drilling. Airborne geophysics and till sampling underway.”





# Mystery - Gold Grain in Till Sampling

TSX Venture: SSE



Property-wide till sampling for heavy mineral concentration, gold grain collection with frequency, size and morphological analysis, and geochemical multi-element analysis of concentrate. Samples in red collected to date.





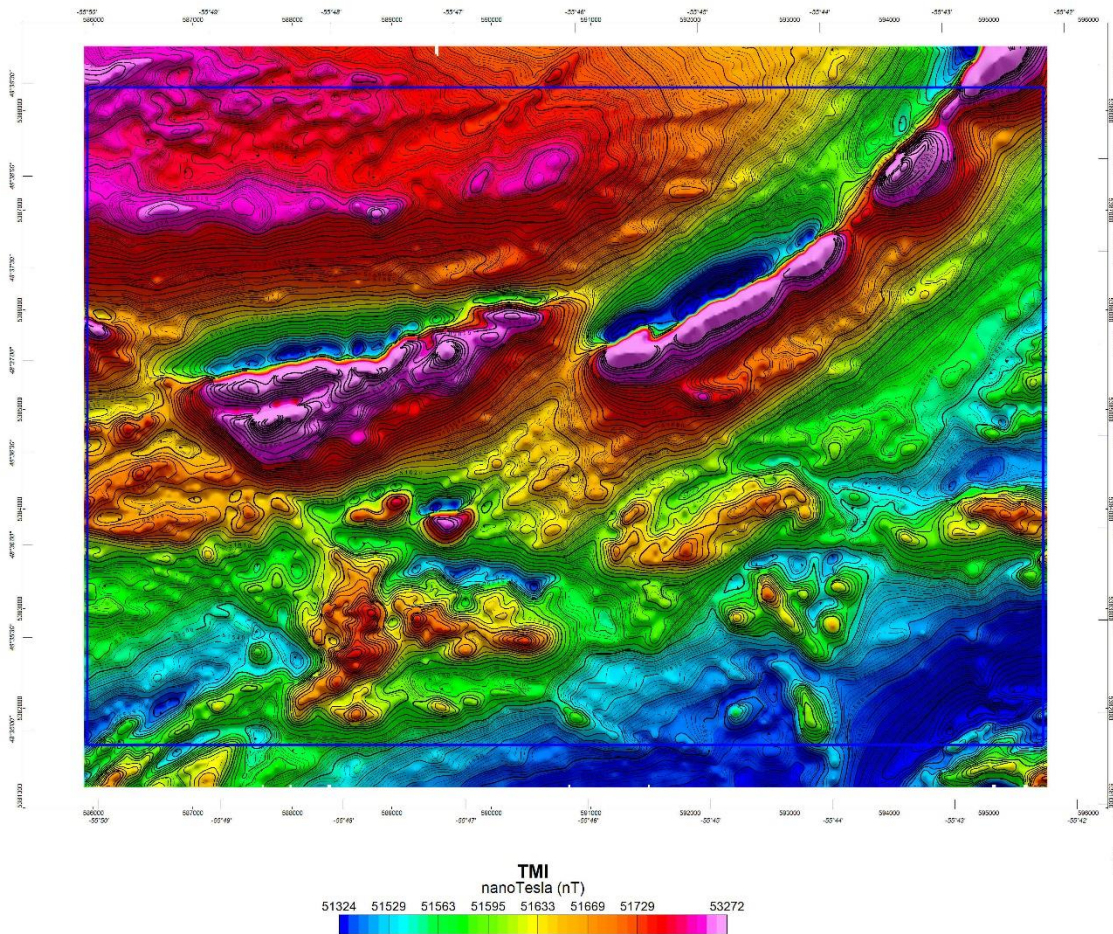
# Mystery - 2022 Airborne Geophysics

TSX Venture: SSE

MPX Geophysics  
Feb 2022  
Preliminary Map

Total Field Magnetics (TMI)

Multiple rock types offset by branching and intersecting structural trends which are key to localization of regional gold mineralization



Survey Area Boundary



SILVER SPRUCE RESOURCES INC.

South Block (Mystery)

Survey in NFLD

Total Magnetic Intensity (TMI)

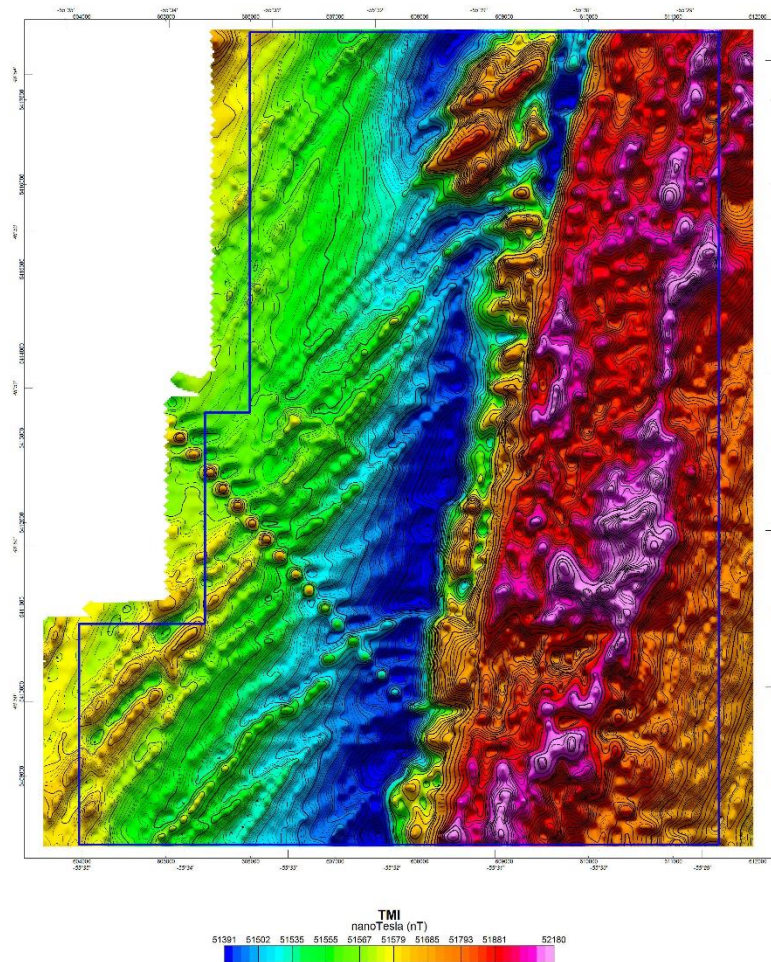
**PRELIMINARY**

MPX Geophysics Ltd.



# Mystery - 2022 Airborne Geophysics

TSX Venture: SSE



 Survey Area Boundary

0 20 40 60 80 100  
Meters

SILVER SPRUCE RESOURCES INC.

North Block (Marilyn)  
Survey in NFLD  
Total Magnetic Intensity (TMI)

**PRELIMINARY**  
MPX Geophysics Ltd.

Marilyn Block  
MPX Geophysics  
Feb 2022  
Preliminary Map

Total Field Magnetics (TMI)

Multiple rock types with N-S linear (contact with and apparent NE fold trend within metasedimentary units on west. Powerline crosses to SE.





# Silver Spruce Resources Inc.

TSX Venture: SSE, USA OTCQB: SSEBF, Frankfurt: S6Q



Suite 440, 1600 Bedford Highway,  
Bedford, Nova Scotia, B4A 1E8 Canada

Michael Kinley CEO Director 902-402-0388  
Greg Davison PGeo VPX Director 250-521-0444

[info@silverspruceresources.com](mailto:info@silverspruceresources.com)  
[www.silverspruceresources.com](http://www.silverspruceresources.com)

